

Time & Talent Discipleship Ministries

St. Mary Magdalen Catholic Parish



*Live Your
God-Given
Strengths*

**“As each one has received a gift, use it to serve one another
as good stewards of God’s varied grace.”**

— 1 Peter 4:10



Time & Talent

Fostering Stewardship as a way of life

Stewardship is based on the understanding that all that we have and all that we are is a gift from God; our time, our talent, our money and even the gift of life itself. We show our gratitude for these gifts by returning a portion of them back to God.

Our gifts of time and talent do not substitute for the gifts of our financial resources (Sacrificial Giving), nor do our gifts of treasure substitute for our gifts of time and talent. All are gifts from God. Consider the guideline of committing five hours per week to St. Mary Magdalen parish or other church ministries and activities, community work, and/or other kinds of social service. We can give more or less than this guide depending on our situation.

Our prayerful gifts of time, talent, and treasure are concrete expressions of our faith and the way we give Glory to God. Through our stewardship of these gifts, we will **“Live our God-Given Strengths”**.

“Stewardship is everything we do after we say we believe.” ~ (John Westerhoff)

Dear Brothers and Sisters in Christ,

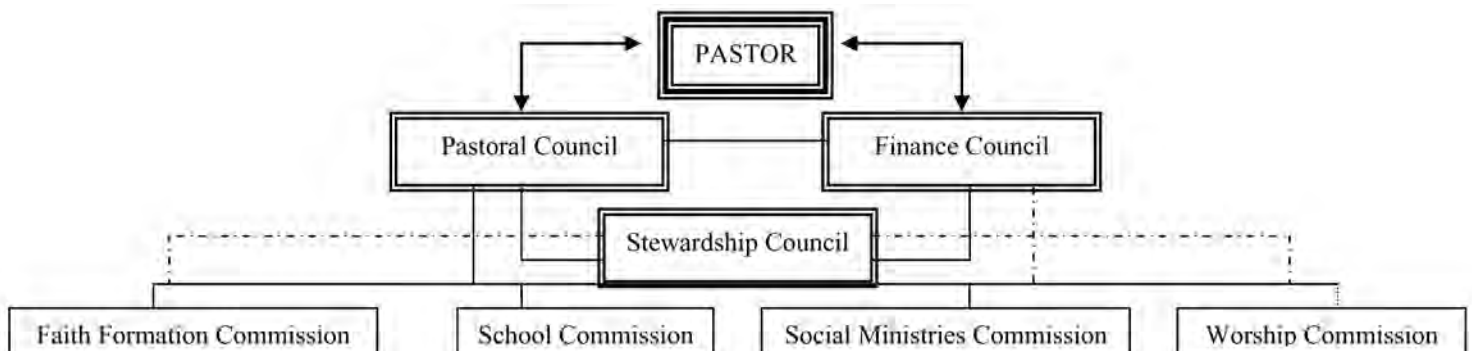
We are grateful to God for generously giving us this precious and marvelous gift of life to both enjoy and share with others. It is with this spirit of gratitude and celebration that our parish will be dedicating much of the next few weeks to prayer and reflection upon the strengths we all have relating to Time & Talent. We will be exploring questions like: How do I come to know what my personal strengths are? What is the Lord uniquely calling me to do with these strengths? Am I a steward or caretaker of these strengths, or am I an owner? What kind of spiritual joy and happiness can come into my life when I use my strengths to live out my vocation or calling from the Lord, when I work with others to build God’s kingdom, and when I serve my neighbor in need?

You are Invited . . .

We invite you to be a Christian Steward of your God-Given Strengths of Time & Talent. Listed within the next few pages are several opportunities for your consideration. We ask you to prayerfully reflect over these opportunities and ask yourself, “How will I give back to God this coming year by serving others in His name?” Response sheets for three members of your household are located at the end of this booklet. Please join us in being good stewards of God’s Church and World by bringing this with you to Mass on April 24th & 25th.

In celebration for all God’s many gifts to us,

Fr. Charles Mitchell
Pastor



This book is laid out according to council or commission and the ministries that report to them.

WHO IS A PARTNER IN THE MISSION?

As a disciple (member) of the parish community, a partner attends and participates weekly in the sharing of the Sunday Eucharist & the sacraments at St. Mary Magdalen. As part of the community of believers, a partner is committed to personal spiritual growth. A partner is committed to living out their call to discipleship within the community by giving their time and talent on a regular basis to carry out the Lord's work. A partner completes the Time & Talent form each spring and serves in at least one area of parish ministry throughout the year. A partner financially supports the mission and ministries of the entire parish through the Sunday and Holy Day envelopes on a regular basis (weekly giving). Every Fall, each partner household makes a sacrificial, financial pledge to support God's work at St. Mary Magdalen for the coming year. They fulfill their pledge throughout the following calendar year.

Pastoral Leadership on a Council or Commission

The Pastor seeks advice and counsel from seven leadership councils and commissions in order to guide the mission of the parish. Our seven councils and commissions are:

Pastoral Council, Finance Council, Stewardship Council, Faith Formation Commission, School Commission, Social Ministries Commission and Worship Commission. Each of these councils and commissions is responsible for an area of parish life and ministry. A council or commission is responsible for developing a strategic plan for ministries which fall under its responsibility, insuring that each plan carries out the mission and direction of the parish as set out by the Pastor and Pastoral Council.

HOW TO GIVE BACK: Application and attendance at the Discernment evening is required. You must be a fully initiated Roman Catholic who has belonged to the parish for at least two years and currently be a partner in the mission. If desiring to serve on the Pastoral or Finance Council, you also must have previously served on a Council or Commission during the last five years. There is a three year commitment, four to five hours per month.

Pastoral Council

Contact: Ann Waite, 407.831.2392

E-mail: awaite1@cfl.rr.com

Service(s) Offered: *The Council is a consultative body that the Pastor can prayerfully reflect with and ask for assistance to guide the overall care and ministry of the parish and the enhancement of its mission. With the Pastor, the Council sets the mission and direction of the parish.*

HOW TO GIVE BACK: Please see the description of "Pastoral Leadership on a Council or Commission" above for information on how to give back. Must have previously served on a Council or Commission during the last five years.

Finance Council

Contact: Donald Holzemer, 407.767.9558

Email: amidon49@cfl.rr.com

Service(s) Offered: *The council is a consultative body providing advice and recommendations to the Pastor concerning the Stewardship of the parish's fiscal and temporal resources, including conducting long range financial planning to support the mission of the parish.*

HOW TO GIVE BACK: Please see the description of "Pastoral Leadership on a Council or Commission" for information on how to give back. Must have previously served on a Council or Commission during the last five years. Diocesan FBI/FDLE clearance and Safety Environment Training completion required.

Stewardship Council

Contact: Dan Copeland, 407.786.4577

E-mail: dcopeland@ribelin.com

Service(s) Offered: *The Stewardship Council promotes the mission of our parish by fostering stewardship as a way of life within all aspects of the parish community. The council is composed of two teams which focus on very distinct aspects of Stewardship:*

The Time & Talent Team: Connect people with ministries that utilize their God-Given gifts and talents. We accomplish this by fostering personal discovery for our parishioners and a welcoming spirit in our ministries.

Stewardship Development Team: Works on a holistic Sacrificial Giving effort—the parish's annual renewal program in November, Planned Giving, major gifts, special campaigns (Parish Endowment, Alive in Christ, Our Catholic Appeal) and other financial development efforts.

HOW TO GIVE BACK: Please see the description of "Pastoral Leadership on a Council or Commission" on this page for information on how to give back. Time & length of commitment involves meeting at least quarterly for at least two years. Open to parishioners who are partners in the mission. Skills needed: planning, organizing, people skills, Love of God and demonstrated commitment to the work of the Church.

Live Your God-Given Strengths

FAITH FORMATION MINISTRIES

Faith Formation Commission

Contact: John Collins, 407.679.7304

Service(s) Offered: *The Faith Formation Commission implements the Parish's mission and goals, as well as seeks to help members of the parish explore and develop their faith and to become more active participants in their faith community. The goals of the commission are: To create opportunities to bring out the gifts which manifest the holiness of each individual, To encourage spiritual development within the individual family and parish, support spiritual direction of each organization, and facilitate the flow of spiritual communication among the organizations within the parish.*

HOW TO GIVE BACK: On page 2, please see the description of "Pastoral Leadership on a Council or Commission" for information on how to participate as it relates to the ministries under the Faith Formation umbrella.

Acts 29

Contact: Craig Drefcinski, 407.333.9088

E-Mail: thedrefs@yahoo.com

Service(s) Offered: *Men who have attended a CROC (Christ Renews Our Community) retreat come together monthly to continue their spiritual faith journey with scripture readings, small group discussions, teachings and witnesses. Meetings are once a month in the annex on Mondays from 7-9pm.*

HOW TO GIVE BACK: Attend a CROC retreat, then join us to continue your spiritual growth.



Whoever wants to follow Christ will have much work to do on his behalf announcing the Good News and serving others as Jesus did.

~ Stewardship: A Disciple's Response, U.S. Bishops' Pastoral Letter on Stewardship

Baptism Preparation/Preparacion de Bautizo

Contact: Deacon Marshall Gibbs, 407.831.1212, x229

Email: MGibbs@StMaryMagdalen.org

Spanish Contact: William & Catalina Nieves, 407.830.7395

Service(s) Offered: *Those desiring to have their babies baptized, please call the contact person at the parish office to learn about the process. Classes are held in English on the third Monday of the Month in the John Paul II room in the Parish Life Center from 7pm-9pm (No registration necessary). Baptisms in English are held every Sunday at 1:15pm-2pm except for the Lenten season. For the Spanish Baptismal classes please call the Spanish contact to sign up.*

HOW TO GIVE BACK: Sacristans are trained and scheduled to assist the Presider preparing to administer the Sacrament of Baptism. The Sacristan would set up and clean up afterwards. They would support the families as they come for this special event. This ministry takes less than an hour about once a month (usually Sunday at 1:15pm in English and 2:15pm in Spanish).

Bible Study/Bible Blitz

Contact: Fr. Ed Thompson, 407.831.1212

Bible Study: *Meet Tuesday mornings from 7:30am-8:15am in the parish office Espiritu Santo conference room. The focus is on the Scripture readings for the upcoming Sunday Mass. Attendees look forward to a deeper more personal appreciation of the liturgical readings and homily. It is a discussion group with Fr. Ed as facilitator.*

Bible Blitz: *Seasonally, Father Ed presents studies of the books of the Bible or special biblical people and topics. Held on Monday nights in the church from 7:00pm-8:00pm. The Blitz is a one hour lecture with individual questions entertained after the session. Textbook: the Bible.*

HOW TO GIVE BACK: Join us at one or both of the sessions above.

Christ Renews Our Community (CROC)

Women's Contact: Mary Jo Nocero, 407.831.1212, x239

E-mail: MJNocero@StMaryMagdalen.org

Women's Contact: Sharon Corso, 407.834.9788

Men's Contact: Paul Bouchard, 407.963.0758

E-Mail: paul@alfordins.com

Service(s) Offered: *Each year at SMM, parishioners put on a weekend experience called Christ Renews Our Community. It's held at the end of August for the men and the first weekend after Labor Day in September for women. This is a powerful time to listen to witness talks & show your faith in small groups. There is no cost but one is asked to bring an open heart & willingness to hear Christ in your life. Call the Church Office and ask for a registration form.*

HOW TO GIVE BACK: Attend the session above and afterwards call the contact person to be a part of the next formation team.

Cursillo Ultreya

Contact: Andy and Rosalie Winkelman, 407.696.8023
E-mail: rowink@aol.com

Service(s) Offered: *Cursillo is both a movement and a method. It is a little course in living Christianity, beginning with a 3-day retreat. The 4th day begins a commitment that lasts the rest of your life. Ultreya for the Cursillo community of St. Mary Magdalen and surrounding area is held the 3rd Fri. of each month, 7:30pm-9:30pm.*

HOW TO GIVE BACK: Coordinators for Cursillo at St. Mary Magdalen prepare our Cursillo Ultreya each month. New candidates must have a sponsor and be approved by our Pastor. As parishioners, we must keep the method of the Cursillo movement alive in all Cursillistas, by witnessing to personal holiness, study and evangelization. You must be Catholic. The Holy Spirit will give you the gifts and the 3-day Cursillo Retreat will help you with the skills. The amount of time required is up to each Cursillistas. It is also up to each Cursillistas to find a ministry that is best for them. There are weekly groups plus group reunions from time to time. The Diocesan secretariats have ongoing school for all Cursillistas.

Easter Egg Hunt

All kids up to age 8 are invited to participate in the annual Easter Egg Hunt. Bring your baskets and prepare for some fun!

FOCCUS Ministry

Contact: Dan & Liz Copeland, 407.786.4577
E-mail: dcopeland@ribelin.com
Spanish Contact: Miguel & Maria Garcia, 407.339.5007

Service(s) Offered: *FOCCUS stands for Facilitating Open Couple Communication, Understanding and Study. It is hoped that during the time the FOCCUS couple spends with the engaged couple, they will “by their lives” witness to the Sacrament and holiness of marriage. We hope that through this process our engaged couples will feel loved, valued, and connected to the People of God in our parish.*

HOW TO GIVE BACK: Couples from our parish who wish to help “facilitate” the process of preparing our engaged couples for marriage must be trained by the Diocese of Orlando Family Life Office, commit for two years to this ministry, and are open and willing to receiving ongoing marriage enrichment and support through this ministry.

Formación Permanente

Contact: Jose Restrepo, 407.719.1116
E-Mail: joseask@aol.com

Service(s) Offered: *The formation of our faith is not about ideologies; it is about our faith in God’s Love, incarnated, died and resurrected in Jesus Christ. Formation offers us an opportunity to grow, be led and renewed by God who loves us and loves us first.*

HOW TO GIVE BACK: All materials and talks are done in Spanish. Time commitment varies. You will be part of a team that teaches, guides, and enhances our faith. Must be interviewed before ministering.

Great Date Night

Contact: Mary Jo Nocero, 407.831.1212, x239
E-mail: MJNocero@StMaryMagdalen.org

Service(s) Offered: *Great date night takes place three times a year in the San Juan de la Cruz room (formerly known as Annex Room 7). The purpose of this event is to encourage couples to spend time on their marital relationship. Childcare is available from 6:45pm – 9:30pm for a small fee. From 7pm-7:30pm, a couple or speaker will talk for a ½ hour on a marriage enrichment topic. Then the couples are encouraged to go for coffee or dinner with their spouse and share the substance of the talk with each other. They can return at 9pm to share with others in a small group but this is not required. Children are to be picked up at 9:30pm. Call the church office to register a week in advance.*

HOW TO GIVE BACK: If you are interested in helping the coordinators host this event, call the contact person and she will assign tasks for the night.

Kids-4-Jesus

Contact: Joyce Davis, 407.695.2596
E-Mail: bigpine3@yahoo.com

Service(s) Offered: *This is a Catholic club that meets once a month to help motivate children to practice virtue, make good choices, and love Christ through their Catholic Faith. The club meeting uses crafts, games, and activities to jump-start the children on their Mission of the Month. Each month your children will be given a mission to help them learn and practice virtue. Each child will receive a mission pack containing a fun book focused on the virtue of the month and a holy hero card of the Saint of the Month. K4J is open to students in grades Pre-K, (ages 3-5 yrs.) through Grade 4.*

HOW TO GIVE BACK: Children in grades 5-8 are always welcome to join as Captains and assist younger students and will have the opportunity to earn service. Parents are welcome to join as Guides and assist with instructing the children. Diocesan FBI/FDLE clearance and Safety Environment Training completion required of disciples.

Marriage Encounter / Renovación Conyugal

Contact: Mary Jo Nocero, 407.831.1212, x239

E-mail: MJNocero@StMaryMagdalen.org

Spanish Contact: Francisco & Maria Peralta, 407.929.8788

Service(s) Offered: *Worldwide Marriage Encounter Weekends (held almost every month at an offsite location) offer an experience designed to give married couples the opportunity to learn a technique of loving communication that they can use for the rest of their lives. It's a chance to look deep into their relationship sharing their feelings, hopes and dreams with each other and with God. The weekend provides an environment for couples to spend time together, away from the distractions and tensions of everyday life, while encouraging them to focus on each other and their relationship. Every marriage deserves that kind of attention! Highly recommended by priests and couples in our parish. There are also at least two Spanish weekends per year. There is a registration fee but no one is turned away for lack of funds.*

Men's Morning Bible Study

Contact: Deacon Henry Libersat, 407.831.1212

Service(s) Offered: *Men gather Monday mornings from 7-8am in the Mother Teresa room to deepen their knowledge of the Bible on topics such as: "What does it take to be a Catholic Man in the Modern World?" and other timely subjects.*

HOW TO GIVE BACK: Join us to deepen your faith.

Ministry of Mothers Sharing (MOMS)

Contact: Colleen Gonzalez, 407.461.2611

E-mail: daileygonzalez@msn.com

Service(s) Offered: *This eight-week course, offered in the Fall & Spring, is for any mother (married, single, divorced, widowed, stepmother, grandmother, etc.) interested in developing self-esteem, relationship skills, and deepening her sense of spirituality. Those who attend develop deep personal friendships and become eager to reach out to our parish family. Childcare is available upon request.*

HOW TO GIVE BACK: Facilitators are trained by the Diocese of Orlando. Additional people are needed for promotions, follow-ups, etc.



Natural Family Planning

Contact: Greg and Barbara Nelsen, 407.260.8679

Service(s) Offered: *This Diocesan-based program is provided at St. Mary Magdalen by trained couples and professional personnel. Its purpose is to help couples in either postponing or achieving pregnancy. This modern and scientific method is 99.98% effective when guidelines are known and knowledge properly applied. It is intended to reflect the dignity of the human person within the context of marriage and family life, promote openness to life, and recognize the value of the child. By respecting the love-giving and life-giving natures, Natural Family Planning can enrich the bond between husband and wife.*

HOW TO GIVE BACK: Classes run about three hours in length. We teach engaged and married couples a natural method of family planning. Training is provided to become a certified teaching couple.

New Beginnings

Contact: Jeanne Morris, 407.333.9135

Service(s) Offered: *The focus of this ministry is to assist those working through the various phases and issues of separation and divorce. Phase I starts in November. This free 20-week program is designed to help participants through the initial stages of recovery addressing topics such as loneliness, grief, single parenting, the Church, accepting change, etc. The group meets Monday nights from 7-9pm. Child Care is provided upon request. Phase II immediately follows Phase I. Text and workbooks are used to aid in the learning of how to put closure on a past relationship and to look at healthy ways of moving on with their lives.*

HOW TO GIVE BACK: Facilitators have been former participants trained in this ministry by the Diocese of Orlando Family Life Office. Diocesan FBI/FDLE clearance and Safety Environment Training completion required of facilitators.

Niños En Acción

Contact: Sara Walsh, 407.599.9815

E-Mail: Sarita@pcunicorn.com

Service(s) Offered: *For Spanish speaking children in elementary school. We meet the 1st & 3rd Friday of each month at 6:30pm. Here the children are motivated to be catechized and to grow in faith with other children of our parish. Sign up your child by calling a contact person.*

HOW TO GIVE BACK: If you would like to help and be part of the team (Moms, dads, grandparents welcome), call the contact person to set up an appointment. Training is provided. Diocesan FBI/FDLE clearance and Safety Environment Training completion required.

Parish Event Childcare

Contact: Feroza D'Abreu, 407.331.7957

Service(s) Offered: *This ministry provides quality childcare for the parents while they attend parish activities that would not be age-appropriate for small children.*

HOW TO GIVE BACK: We enlist help from teenagers (14 & up) in the Youth Group as well as mature adults. Diocesan FBI/FDLE clearance and Safety Environment Training completion required of sitters.

Religious Education K-8/Sacramental Preparation

Contact: Larann Wilson, 407.831.1212, x233

E-Mail: LarannW@StMaryMagdalen.org

Service(s) Offered:

Confirmation of Young Adults: *A Sacrament of Initiation but not the end of faith formation. Earliest reception of this sacrament is 9th grade. A 9-session (Mondays 6:30pm-9pm) preparation allows teens to prepare for the sacrament that is a further entry into Church Membership & Christian Discipleship. Candidates will walk this journey in various ways with their parents, sponsors, and parish.*

First Communion Preparation: *Preparation to understand the Sacraments and how to receive these gifts from God through the Church. The 4-session (Tuesdays 6pm-8pm in the Spring) preparation for the children and parents will help families understand what really happens at the Mass and that coming together to receive Jesus in Communion is the greatest thing we do as Catholic Christians.*

First Reconciliation Preparation: *Preparation to understand the Sacraments and how to receive these gifts from God through the Church. The 4-session (Tuesdays 6pm-8pm in the Fall) preparation calls the parents to join their children in the faith journey and learn what it is to be a reconciling people.*

Religious Education: *"The aim of catechesis is to put people not only in touch, but also in communion and intimacy with Jesus Christ." (Catechesis in Our Time 5). As disciples of Christ we are called to continuous conversion. We grow in a deeper knowledge, understanding, and relationship with our Lord through the various stages of our lives. Since the faith formation of children is just beginning, the goal of St. Mary Magdalen's Religious Education program is to collaborate with the parents and guardians (whom the Church recognizes as the primary and principle educators) to aid our children on their journey. Classes are held from September through May: K-8: Wednesdays 4pm-5:30pm or K-8: Saturdays 9:15am-10:45am.*

HOW TO GIVE BACK: Diocesan FBI/FDLE clearance and Safety Environment Training completion required of all Catechists; as well as, growing in their own faith formation by participating in the Diocesan Catechist Certification program.

Confirmation of Young Adults: Catechists would need to be available for each session and available for one weekend retreat.

First Communion Preparation: Catechists would need to be available for each session.

First Reconciliation Preparation: Catechists would need to be available for each session.

Religious Education: Catechists would need to be available for each session.

R.C.I.A. (Adult Sacramental Catechesis) for all unbaptized, age 8 and over

Contact: Deacon Marshall Gibbs, 407.831.1212, x229

Email: MGibbs@StMaryMagdalen.org

Spanish Contact: Roberto Gomez, 321.277.8810

E-mail: robertogom10@hotmail.com

Service(s) Offered: *Christian Trinitarian Baptism for individuals age 8 and over is accomplished through the R.C.I.A. which is an acronym for the Roman Catholic Rite of Christian Initiation of Adults. This is the process the Church uses to prepare anyone who has never been baptized for entry into the Roman Catholic Christian Faith. This catechetical process is also designed to prepare and welcome baptized members of other Christian denominations who wish to become Catholic, Catholics who have been away from the Catholic faith and wish to return, including those who wish to receive any missed sacraments needed to be in full union with the Church.*

HOW TO GIVE BACK: You could be a sponsor or help out the formation team – what a wonderful way to share your faith! The time needed is a few hours weekly and varies in length from six weeks to two years. Call Deacon Marshall or Roberto Gomez and they will gladly help you become involved in this process. Diocesan FBI/FDLE clearance and Safety Environment Training completion required. In addition, must be enrolled in the Diocesan Catechist Certification program.



Vacation Bible School

Contact: Karen Malatesta, 407.339.4741

Contact: Adele Bruno, 407.682.0342

Service(s) Offered: *This theme-based 5-day morning program offers the children an opportunity to learn more about their Catholic Faith through the lives of the saints and the Blessed Mother. Open to pre-school age children through those entering 5th grade in the month of June. It's a fun filled week of music, drama, lessons and crafts.*

HOW TO GIVE BACK: A wonderful ministry not only for adults, but for high school and middle school students who wish to help out. Various needs: Plan activities and refreshments, scheduling disciples and participants, supervise children as they go through stations while others prepare lessons, teach music, conduct drama, or prepare snacks. It's great fun for all involved! Diocesan FBI/FDLE clearance and Safety Environment Training completion required.

Youth Ministry (Life Teen & The Edge)

Contact: AJ Castro, 407.831.1212, x232

E-mail: Youth@StMaryMagdalen.org

Service(s) Offered: *Serving the junior high (The Edge) and high school (Life Teen) youth, the principles of Renewing the Vision are implemented (Advocacy, Catechesis, Community Life, Evangelization, Justice & Service, Leadership Development, Prayer & Worship, and Pastoral Care). We reach out to all youth in the community to help build a strong foundation for a mature faith and prepare them to "go into the whole world and proclaim the Gospel to every creature" (Mark 16:15).*

HOW TO GIVE BACK: Disciple commitment is for one school year (roughly August to May). Approximately 8 hours a month for meetings, services and special events. Ministers (volunteers) need to meet with the Steward for Youth Ministry for an interview and Diocesan FBI/FDLE clearance and Safety Environment Training completion required. In addition, must be enrolled in the Diocesan Catechist Certification program.



"FOLLOWING JESUS IS THE WORK OF A LIFETIME!"

"At every step forward, one is challenged to go further in accepting and loving God's will."

~ Stewardship: A Disciple's Response, U.S. Bishops' Pastoral Letter on Stewardship

Live Your God-Given Strengths

SCHOOL MINISTRIES

School Commission

Contact: Paul Denning, 407.897-5283

E-Mail: mdenning@earthlink.net

Service(s) Offered: *The School Board serves as an advisory group to the principal and the Pastor. They meet once a month with sub-committees in between.*

HOW TO GIVE BACK: Please see the description of "Pastoral Leadership on a Council or Commission" on page 2 for information on how to participate. Diocesan FBI/FDLE clearance and Safety Environment Training completion required.

Catholic Youth League

Engages our St. Mary Magdalen youth (kindergarten through 3rd grade) in fun sport activities.

Scouts

BOY SCOUTS – TROOP 38

Contact: John Carey - Scoutmaster, 407.366.9289

E-Mail: johnacarey@bellsouth.net

Service(s) Offered: *Boy Scouts provides young men the opportunity to develop strong character, physical fitness, good citizenship, and leadership skills with the goal of achieving the rank of Eagle Scout. Our year-round program is open to young men age 11 to 17. The Troop meets Monday evenings from 7:30pm-8:30pm in the school cafeteria. Weekend trips involving hiking, camping, biking, and canoeing are scheduled throughout the year in addition to one week of high adventure.*

HOW TO GIVE BACK: Adults may participate as leaders who mentor the young men through the scouting program. Training is provided. Leaders must fill-out an application with the Boy Scouts of America and Diocesan FBI/FDLE clearance and Safety Environment Training completion required.

CUB SCOUTS

Contact: Megan Martin, 407.599.1188

Service(s) Offered: *Designed for boys in the 1st through 5th grade, scouting prepares young people to make ethical and moral choices over their lifetimes by instilling in them the values of the Scout Oath and Law.*

HOW TO GIVE BACK: Den leaders hold meetings and arrange activities according to requirements prescribed in scout handbooks. It involves two-to-five hours per week during the school year. There is a leader's application required along with Diocesan FBI/FDLE clearance and Safety Environment Training completion. Leadership training is provided through the Central Florida Council, Boy Scouts of America.

GIRL SCOUTS, BROWNIES, & DAISIES

Contact: Amy Martin, 407.252.7525

E-mail: amypmartin@aol.com

Service(s) Offered: *Girl Scouts is the preeminent organization for girls in the United States. Our purpose is to help girls develop self-esteem, leadership skills, and a strong sense of values. We help girls learn to relate to others and to contribute to their parish and school communities.*

HOW TO GIVE BACK: Being a leader requires one-to-two hours per week with the troop and one-hour monthly at a Leaders Unit Meeting. Training is provided and leaders must fill out an application with a background check form, and Diocesan FBI/FDLE clearance and Safety Environment Training completion required.



“God places within you a calling – a calling to serve others and advance the cause of Christ and the Church, a calling to ministry. Your calling is what God wants you to do with your life; your talents and strengths determine how you will get it done.”

(Excerpt from “Living Your Strengths”)

St. Mary Magdalen School

Contact: Lloyd Kinderknecht, 407.339.7301

Service(s) Offered: The school environment is “Christ-centered,” committed to the development of the spiritual, academic, social, emotional and physical potential of each child. The school is accredited by the Florida Catholic Conference of Bishops. Additionally, the school was awarded a “Blue Ribbon School of Excellence 2006,” the highest award given to a school by the U.S. Department of Education. The school provides quality Catholic education within a safe, supportive and challenging environment. Students score in the top 10th percent of the nation on standardized tests. Currently, 415 students, kindergarten through grade 8, benefit from the diverse gifts and talents of the faculty. All teachers are Florida State Certified/qualified. Teacher assistants, resource teachers and a teacher of the gifted enhance the educational opportunities of the students. The school adheres to the Florida Sunshine State Standards which have been enhanced by a Catholic Identity component. Extracurricular activities include sports and middle school drama. Students who meet the criteria in grades 6, 7, 8 are invited to become members of the National Junior Honor Society. Spanish is taught in grades kindergarten through 8. The fine arts program includes: art, art history, general music, instruments, show choir, church singing and band.

HOW TO GIVE BACK: Disciples are welcome. Diocesan FBI/FDLE clearance and Safety Environment Training completion required.

St. Mary Magdalen Home & School Association

Contact: Josie Joyce, 407.831.2354

E-Mail: jjoyce82@netzero.net

Service(s) Offered: *The Home & School group coordinates the Parent Volunteer (Disciple) Programs and the fundraising. Members are interviewed by the executive board.*

HOW TO GIVE BACK: They meet two times per month during the day and there are four evening meetings. Disciples must have a Diocesan FBI/FDLE clearance and complete the Safety Environment Training.

St. Mary Magdalen Mustang Club

Contact: Scott Sheer, 407.696.2090

Service(s) Offered: *Fundraising arm of the school athletic department.*

St. Mary Magdalen Night of Dreams Auction

Contact: Lisa Cioffi, 407.810.5600

E-Mail: cioffilis@gmail.com

Service(s) Offered: *The St. Mary Magdalen Night of Dreams Auction is a fundraising event primarily benefitting St. Mary Magdalen School and potentially other parish ministries. Funds raised specifically go toward school scholarship and academic needs as well as toward charities served by other involved ministries.*

HOW TO GIVE BACK: Disciples are needed to chair various auction sub-committees including Solicitations, Promotion/Communication, Catering, Check-in/Check-out, Family Fun Night, Entertainment, Ticket Reservations and related committees under these categories. Meetings are typically every two weeks with individual work done in between.

St. Mary Magdalen Pre-School

Contact: Elisa Steiner, 407.831.3740, x279

E-mail: ESteiner@StMaryMagdalen.org

Service(s) Offered: *St. Mary Magdalen Pre-School (formerly known as The Early Learning Center) was established by the parish primarily to provide quality care for the children of working parents. It provides an excellent preschool education with highly qualified teachers and stimulating learning environments. The center is fully licensed and is in the process of FCC Accreditation. Interested families need to contact the center and be put on a waiting list if no immediate vacancy is available. The pre-school runs at full capacity so this is a routine procedure. State law dictates classroom size so it is monitored closely. We offer Voluntary Pre-Kindergarten (VPK).*

HOW TO GIVE BACK: Disciples and staff must have FBI/FDLE clearance by both the Diocese and Florida Department of Children and Families; must complete the Safety Environment Training. Staff must have a minimum of a CDA (Child Development Associates credential). Training is provided and time commitments vary on availability and need. Stop by any time Monday - Friday, 7:00am-6:00pm.



Jesus' call is urgent. He does not tell people to follow him at some time in the future but here and now – at this moment, in these circumstances.

There can be no delay.

“Go and proclaim the Kingdom of God...”

~ Stewardship: A Disciple's Response, U.S. Bishops' Pastoral Letter on Stewardship

Live Your God-Given Strengths

SOCIAL MINISTRIES

Social Ministries Commission

Contact: Joe Hillebrandt

E-Mail: jmh@cbsorlando.net

Service(s) Offered: *The Social Ministries Commission is a consultative body to the Pastor which promotes awareness of Catholic Social Teaching and opportunities to put it into practice. Our commission coordinates the following parish ministries: family services, ministry to the sick & bereavement, ministries for retired persons, those with special needs, social justice and respect for life. It addresses this with prayer, education, service, justice and action.*

HOW TO GIVE BACK: Please see the description of “Pastoral Leadership on a Council or Commission” on page 2 for information on how to participate.

Adult Center

Contact: Phyllis Fox R.N. 407.831.9630

E-mail: AdultCenter@StMaryMagdalen.org

Mission Statement

“To provide care and therapeutic activities during the day to frail seniors in a loving environment focusing on the dignity of each person, thus providing respite and support for caregivers.”

Service(s) Offered: *Adult day care is a way of providing daytime supervision and assistance to physically and/or mentally frail adults 55+. This type of care allows family members or caregivers to continue to work, provide care to another adult, and/or receive respite and some private time. Adult day care is really a kind of therapy, which invites the adult into a community of other adults for socialization, mental stimulation and enjoyment at the same time providing needed care and services. St. Mary Magdalen Adult Center serves adults with special physical needs, those with chronic health problems, as well as those needing companionship and support. The Adult Center reflects the love that the parish community of St. Mary Magdalen has for adults who need special care and attention. The compassionate care provided is a sign of God's love and presence among us.*

HOW TO GIVE BACK: Visitors are welcome. Disciples at the Adult Center assist staff with crafts, ceramics or preparation of activities or lunch. Some come in to entertain, play the piano or other musical instrument, sing, teach, and show their hobbies. They need to be patient and understanding with seniors, have some knowledge of memory impairments, behaviors and how to respond. They should be free of communicable disease and appropriately dressed and clean. They must show confidentiality and respect for the clients. Licensed by State of Florida Agency of Health Care Administration. Training is provided for caregivers and disciples. Diocesan FBI/FDLE clearance and Safety Environment Training completion required. It usually requires 2 to 3 hours at the Adult Center which is open 7:30am-5:30pm Monday through Friday. Length of commitment is open. Resource materials are available i.e., Alzheimer's, stroke, Parkinson's etc.

Alzheimer's Support Group

Contact: Annette Kelly, 407.331.0911

Service(s) Offered: *This group provides support and information for caregivers and/or friends of persons with Alzheimer's or a related memory disorder. Meetings are the second Monday of each month from 7:30pm-9pm.*

HOW TO GIVE BACK: Those who wish to help out with the group must be Diocesan FBI/FDLE cleared and complete the Safety Environment Training.

Angels Among Us

Contact: Fr. Tom Smith, 407.831.1212

Service(s) Offered: *Our beautiful angels of special persons put on a musical performance every year to benefit building homes for the Dominican Republic and are available for other causes. This is a marvelous opportunity for the student performers to nourish their unique personalities, enhance their self-image, and enables them to express their beautiful selves through singing and dancing. Our teachers are professional in voice and dance and we bring out the best in our student performers. Any special person is welcome to join the group (there is no charge), the only requirement is that they must be able to communicate. They will have the opportunity to perform in the Fr. Tom Smith show w/ the "Fabulous Four" which includes Frank Corso, Lisa Cioffi, Diane Della Piazza, and Angel Resende. And, every production is under the direction of Elsie Doughty. We meet every Monday from September to May at 6pm-7:30pm in the Parish Life Center.*

HOW TO GIVE BACK: Adults who wish to assist with productions and setting up materials for rehearsals must obtain a Diocesan FBI/FDLE clearance and complete the Safety Environment Training.

Bereavement (Funerales) Team

Contact: Rosemary Kazyk, 407.831.1212, x223

E-mail: RKazyk@StMaryMagdalen.org

Service(s) Offered: *St. Mary Magdalen Bereavement Ministry serves the parish community by helping family members who have lost a loved one.*

HOW TO GIVE BACK: Disciples assist family members who have had a loved one die:

- Plan the funeral liturgy. Arrange a wake service and/or a graveside service as needed. Assist two weeks at a time on a rotating basis throughout the year.
- Attend the Funeral Mass to offer support to the grieving family.
- Assist with the Grief Support Groups: Every Thursday morning for those who need support at the time of the death of a loved one, either recent or at some time in the past. A six-week evening Grief Support Group is offered in Spring & Fall.

It takes a special kind of person to be involved in this ministry, so an interview is required to determine suitability and availability. Diocesan FBI/FDLE clearance, Safety Environment and Bereavement Training are required.

Blood Bank Donor

Contact: Rosemary Kazyk, 407.831.1212 x233

E-Mail: RKazyk@StMaryMagdalen.org

Service(s) Offered: *Through the American Red Cross, this is an opportunity to give blood for those in need. What a wonderful way for our parishioners to give back to the community!*

HOW TO GIVE BACK: Several times a year, the blood bank sets up in the parking lot of St. Mary Magdalen. It only takes a few minutes and is very much appreciated.

Coalition for the Homeless

Contact: Mike Brockman, 407.463.0204

E-mail: mike@brockmaninsurance.com

Contact: Beth Lu, 407.862.3378

E-Mail: bethlu@cfl.rr.com

Service(s) Offered: *The Coalition for the Homeless assists more than 800 men, women and children (over 170 are children) each day by providing them with services needed to move them from the state of homelessness to self-sufficiency. On the 4th Saturday of every month, the St. Mary Magdalen community buys and prepares food to serve those in need.*

HOW TO GIVE BACK: It takes about three hours per month 5pm-8pm. Training is provided and no special application is required. Diocesan FBI/FDLE clearance and Safety Environment Training completion required.

Dial-A-Smile

Contact: Dianne Delia, 407.831.7747

Service(s) Offered: *This ministry consists of two groups: One special group of angels that extends a warm welcome call to our new parishioners throughout the year and a second group of angels that call parishioners who are shut-ins or are alone to let them know their Church community cares about them.*

HOW TO GIVE BACK: Calling times vary from making one initial call of welcome, to weekly or monthly calls to our shut-ins or those who are alone. Training provided.

Drivers Safety Program by AARP

The AARP Drivers Safety program is a popular course for drivers age 50 and beyond for increasing safety awareness. St. Mary Magdalen offers the class in the Fall and Spring. The program is advertised in the weekly bulletin, class size is limited. Attendance is required for both days to obtain a certificate of completion. The completion of the program may lower insurance rates, dependent on the insurance company. It is suggested taking the class as a refresher every three years to continue receiving insurance discounts.

Faith Community Nursing (formerly Parish Nurse)

Contact: Rosemary Kazyk, 407.831.1212 x233

E-Mail: RKazyk@StMaryMagdalen.org

Service(s) Offered: *The Faith Community Nurse cares for the whole person integrating faith and health. The Nurse serves as a health educator, a personal health counselor, a referral agent to community services, trainer of disciples, a developer of support groups, and a health advocate. In addition, the nurse empowers people to make good health choices, reviews medications to see if they are taken appropriately, develops support, and provides health education programs of interest to the community.*

HOW TO GIVE BACK: A disciple is needed to take on the LEADERSHIP role to establish this ministry here at St. Mary Magdalen (which requires a current Florida Registered Nurse License). Cabinet members and other (former or current) medical professionals are needed to support the mission. All disciples must obtain Diocesan fingerprinting clearance and complete the Safety Environment training. St. Mary Magdalen Parish will provide an office, equipment and the finances to attend a Parish Nurse Preparation course. We also have medical professionals who will assist in implementing planned programs.

Family Services

Contact: Dan Sims, 407.227.8974

Service(s) Offered: *We are an outreach program with the mission of supporting parishioners in times of need. We can provide financial assistance to families in emergency situations. Also, we connect people with other agencies offering various services.*

HOW TO GIVE BACK: On-call disciples are needed for one week every six-eight weeks. Diocesan FBI/FDLE clearance and Safety Environment Training completion required.

Grief Support Group

Contact: Rosemary Kazyk, 407.831.1212, x223

E-mail: RKazyk@StMaryMagdalen.org

Service(s) Offered: *If you are suffering from the loss of a loved one, we meet every Thursday morning at 10am. A six-week evening Grief Support Group is offered in Spring & Fall.*

HOW TO GIVE BACK: These kind people meet with the grieving persons to help them cope with their loss. The group also rotates facilitation of the meetings. It requires about two hours weekly and training is provided. Diocesan FBI/FDLE clearance and Safety Environment Training completion required.

Habitat for Humanity

Contact: Joe Pullara, 407.339.1327

E-mail: joetta4@cfl.rr.com

Service(s) Offered: *St. Mary Magdalen supports Habitat for Humanity and has committed to build at least one house each year. This commitment includes providing all the services, materials and disciples to build this house.*

HOW TO GIVE BACK: A core committee oversees this program and includes sub-committees such as fundraising, material solicitation, construction and landscaping. Each year there are several functions to raise money for this outreach program. In December, there is a parish wide solicitation for disciples to build each house. It can involve a few hours or a long term commitment. There is a disciple sign up form required. The group works on the project weekdays and Saturdays, January through April.



“Every individual – every parish member – plays a role in energizing and shaping the Church”

(Excerpt from “Living Your Strengths”)

Income Tax Preparation

Contact: Pat McGroarty, 407.831.1212

Service(s) Offered: *Through AARP, members of the community are assisted in filling out their federal income tax forms at no charge. You are asked to bring a copy of last year's return and all the documents needed to complete an accurate accounting. The amount of time to complete varies. Usually the service is provided on Thursday in the Parish Life Center, February through April.*

HOW TO GIVE BACK: If you wish to assist with this ministry, you must complete the AARP requirements and obtain a Diocesan FBI/FDLE clearance and complete the Safety Environment Training.

Just Faith

Contact: Brandon Vogt, 407.443.2191

E-Mail: smmjustfaith@gmail.com

Service(s) Offered: *Do you find yourself wondering how to live your faith in today's complex world? Living our faith and understanding today's challenges takes reflection, study, prayer, and community. Just Faith is an intensive formation program for people who want to encounter the Good News that Jesus brought to the poor. Through books, DVD's, speakers, experiences, prayer, and dialogue your heart will no doubt be transformed. 30-week sessions running from September to May. Sign-ups normally take place in August.*

HOW TO GIVE BACK: After attending the session above, if you wish to assist with coordination efforts a Diocesan FBI/FDLE clearance and completion of the Safety Environment Training is required.

K.I.S.S.M. (Keeping Independent Seniors Safely Mobile)

Contact: Rosemary Kazyk, 407.831.1212, x223

E-mail: RKazyk@StMaryMagdalen.org

Service(s) Offered: *This ministry provides transportation for those who have no alternative means to get to important appointments and/or Sunday Mass.*

HOW TO GIVE BACK: No regular commitment for drivers. When need arises disciples are called and are free to decline. Only a one time initial training meeting. Diocesan FBI/FDLE clearance and Safety Environment Training completion required.



Ministry to the Sick/Ministerio de Los Enfermos

Contact: Rosemary Kazyk , 407.831.1212, x223

E-mail: RKazyk@StMaryMagdalen.org

Spanish Contact: Miguel Garcia, 407.339.5007

Service(s) Offered: *The purpose of the ministry is to visit the sick at the hospital, nursing homes and those who are homebound at the moment in their life when they need a prayer; a visit and perhaps the comfort and healing power of the Body of Christ.*

HOW TO GIVE BACK: Minister at either Florida North or/and Florida South hospitals. Minister at any of the five nursing homes or assisted living facilities. Minister with homebound visits. The amount of time can be as little as once a week or several times a month. An interview is required to determine the interest and suitability. Must become an Extraordinary Minister of Holy Communion - classes offered periodically by the Diocese. Attend Diocesan Certification training and ongoing education (Most are offered at the parish level). Diocesan FBI/FDLE clearance and Safety Environment Training completion required.

Parish Advocate for the Elderly

Contact: Rosemary Kazyk, 407.831.1212, x223

E-mail: RKazyk@StMaryMagdalen.org

Service(s) Offered: *To assist older persons in maintaining a dignified quality of life while addressing the unique spiritual needs of the aging process.*

HOW TO GIVE BACK: This advocate follows the "Respect Life Committee" guidelines recruiting disciples and staying current on issues concerning the elderly. Some training is required by the Diocesan Respect Life Office. Diocesan FBI/FDLE clearance and Safety Environment Training completion required.

Prayer Blanket Team

Contact: Marjorie Warren, 407.298.0444

Service(s) Offered: *This group uses their creative skills to put together and pray over a beautiful keepsake that is then given to someone in our parish who is seriously ill or grieving the loss of a loved one.*

HOW TO GIVE BACK: The team meets to sort and cut the fabric. The blanket kits are available at the parish office for those who wish to share their sewing skills and complete the blanket. The amount of time needed is determined by need and availability. Some of the work can be done at home at your own convenience.

Prison Family Support Group "Families Ministering to Families"

Contact: Jean Canatsey, 407.695.6818

E-Mail: fmforlando@gmail.com

Service(s) Offered: *"For I was...in prison and you visited me. Lord when did we see you in prison and visit you? Truly, I tell you, just as you did it to one of the least of these...you did it to me." (Matthew 25). According to the U.S. Bishops "We must recognize the human dignity of all prisoners and remember that Jesus himself was a prisoner". In this spirit, we recognize the fact that the family members left behind when someone is incarcerated are just as affected as the inmate. We meet the 3rd Saturday morning of each month immediately following the 8am Mass to share our stories, information and to encourage one another during this most difficult time. We are also available to help those released from prison and along with their families, assist in integrating them back into the parish community as active and welcomed members. Confidentiality is a priority.*

HOW TO GIVE BACK: Diocesan FBI/FDLE clearance and Safety Environment Training completion required of all disciples who wish to visit inmates who are not family members. If you are not in this situation but would like to participate in this ministry, we welcome you to attend our meetings and join those of us who send cards and letters to inmates on a regular basis.

Respect Life

Contact: Gloria Esteban, 407.497.0979

E-mail: esteban4@earthlink.net

Service(s) Offered: *We, as St. Mary Magdalen Respect Life Ministry, will serve Jesus with His least ones, the unborn, the troubled, and the deprived through inspiring others to care and speak out through pastoral care and legislative advocacy, instill a deeper appreciation for God, for life and for every person through education on the Church's teachings, and bring Christ more fully into the decision-making process of our government.*

HOW TO GIVE BACK: Participation includes a wide range of opportunities. Time and talent will be matched to each individual. Training is provided and no special application is required.

Sunday Bus Drivers

Contact: Jim Blanton, 407.695.3665

Service(s) Offered: *The parish currently has two mini-buses that go out into the community and pick up those, particularly the elderly, who have no transportation to 10am Sunday Mass. Quite often this is the only time they do get out so we are very happy to help.*

HOW TO GIVE BACK: For those in need the bus picks them up at their home, apartment or assisted living quarters. Each is helped off the bus and some even into the church if necessary. After Mass, they are assisted back on the bus and driven home. It takes about three hours total but how many times a month you choose to do it is up to you. Some training will be provided. A CDL class P driver's license is required and a clean driving record. One must be patient and able to assist the passengers on and off the bus. Diocesan FBI/FDLE clearance and Safety Environment Training completion required.

Thanksgiving Feast

Contact: Diana Anderson, 407.682.2120

E-Mail: leibeck@aol.com

Service(s) Offered: *On Thanksgiving Day the parish provides a meal for those who otherwise would be alone for the holiday. It is a great time to gather after Mass and enjoy all the excitement of the holiday.*

HOW TO GIVE BACK: Team members are fellow parishioners who take time out to plan and prepare the meal, set up on the Wednesday before, decorate the tables and tidy up afterwards. The amount of time you commit is open. Diocesan FBI/FDLE clearance and Safety Environment Training completion required.

Wednesday Retired Parishioners

Contact: Lynn Dekleva, 407.788.6973

E-mail: ldekleva@earthlink.net

Contact: Toni Martiny, 407.831.0543

E-mail: lmartiny@cfl.rr.com

Service(s) Offered: *This group provides socialization for the retired on Wednesday afternoons from 1pm-4pm. For some this is their only outing outside of weekly Mass. No requirement is necessary. Just a fun time to get together each week.*

HOW TO GIVE BACK: Caregivers provide assistance with any problem when possible, arrange luncheons and celebrate monthly birthdays. They also are a great help with planning special parties for Christmas, Super Bowl, Valentine's, St. Patrick's Day, and pot luck dinners. It is helpful if caregivers know how to play Bingo, cards or games. To assist no special training is needed but Diocesan FBI/FDLE clearance and Safety Environment Training completion is required. This group desperately needs transportation for those who would like to join but have no way of getting to the church or back home. They meet September through May each year.

Live Your God-Given Strengths

WORSHIP MINISTRIES

Worship Commission

Contact: Joe Walter, 407.578.1416

Service(s) Offered: *The primary role of this group is to aid and lead the parish community of St. Mary Magdalen to grow spiritually in faith and love through deeper prayer and better worship.*

HOW TO GIVE BACK: Please see the description of “Pastoral Leadership on a Council or Commission” on page 2 for information on how to participate.

Altar Servers/Monaguillos

Contact: Deacon Jerry Kelly, 407-331-0911

Spanish Contact: Elizabeth Ortiz, 321.439.0299

E-Mail: elisusanaortiz@hotmail.com

Service(s) Offered: *These young boys and girls come to assist the priest and deacons during the Mass. It is an opportunity for full, active, conscious participation in our liturgies.*

HOW TO GIVE BACK: Servers must be in the 5th grade or higher and be a registered member of St. Mary Magdalen Parish. Parent and child must both attend an informational meeting, then sign a commitment form, which is signed each year thereafter. Training must be completed before they can serve and each server receives an informational booklet when they come to training. They should arrive twenty minutes before Sunday Mass. If they are students at SMM School, they may be asked to serve at the 8:30am Wednesday Mass. There will be times when they will be asked to sign up for special liturgical celebrations and Holy Days as needed. Disciples 14 & up must have Diocesan FBI/FDLE clearance and complete the Safety Environment Training.

Altar Linens Society

Contact: Valerie Callan, 407.830.8018

E-mail: queeny64@aol.com

Service(s) Offered: *We take the responsibility of caring for the altar linens used in the Eucharistic celebration.*

HOW TO GIVE BACK: Altar cloths & purificators require special handling and regular cleaning on a weekly basis. Disciples are on duty for about one hour per week, one month every third month. The commitment is open and the training is simple.

Art & Environment

Contact: Mark Ayers, 407.831.1212, x253

E-mail: MAyers@StMaryMagdalen.org

Service(s) Offered: *These artists gather together to enhance worship with art and creativity throughout the church and parish grounds.*

HOW TO GIVE BACK: Environment can foster various moods of festivity, penitence, anticipation but always of dignity and hospitality. One must have the ability to dream and create. No one person can do it all – florist, seamstress, quilter, painter. Some lifting/ carrying of various sizes of art & environment supplies is needed. Their work follows the liturgical seasons of Advent/Christmas, Lent/Easter, and are sub-divided into two decoration teams for each area.

Celebrate Marriage Sunday

Contact: Mary Jo Nocero, 407.831.1212, x239

E-mail: MJNocero@StMaryMagdalen.org

Service(s) Offered: *On the last Sunday in January, St. Mary Magdalen Parish hosts Celebrate Marriage Sunday. Right after the homily, all the couples have the opportunity to renew their marriage vows. We especially honor those who have been married 5, 10, 15, 20, 25, 30, 35, 40, 45, and 50-plus years. Our parish gives special honor to the couple who married most recently and to one of the longest married couples in our parish. Look for the registration form in the parish bulletin each year in early January.*

HOW TO GIVE BACK: Those who wish to help coordinate the event are encouraged to call the contact person.

Centering Prayer/Oración Centrante

Contact: Marie Martin, 407.774.1133

Spanish Contact: Claudia Salazar, 321.460.9943

Service(s) Offered: *“Be still and know that I am God.” Psalm 46. Centering Prayer deepens our relationship with God by learning and strengthening a contemplative prayer practice. We gather each Monday evening from 7pm-8:30pm in English and every Tuesday at 7pm in Spanish and on Fridays at 10am in Spanish. Instruction is provided and everyone is welcome.*

HOW TO GIVE BACK: Join us at one of the above sessions.

Choirs

ADULT CHOIR (10AM Sunday Mass)

Contact: Mark Ayers, 407.831.1212, x253

E-mail: MAyers@StMaryMagdalen.org

Service(s) Offered: *The primary function of the adult choir is to enhance the liturgy and lead the assembly in song. Selected from a wide variety of musical styles, the repertoire ranges from traditional chant to spirituals and contemporary Choral.*

HOW TO GIVE BACK: The choir sings at the 10AM Mass from September through June and at all special liturgical celebrations throughout the year. Rehearsals are Wednesdays from 7:30pm-9pm in the St. Cecilia music room, with extended hours during the holy seasons. Singing skills are necessary and require an audition. Cantors are selected from the Choir and also require an audition. Choir space is limited due to seating capacity. We currently have a waiting list for this ministry.

ADULT HANDBELL CHOIR

Contact: Mark Ayers, 407.831.1212, x253

E-mail: MAyers@StMaryMagdalen.org

Service(s) Offered: *The Adult Handbell Choir provides a unique kind of music to enhance the liturgies.*

HOW TO GIVE BACK: Men and women with keyboard, band and/or orchestral experience frequently make excellent handbell ringers. Music reading ability is required. Rehearsals are on Wednesdays 5:30pm-7pm in the Church balcony, during the months of September-May. The group performs once a month at the 10am Sunday Mass and on major feasts such as Christmas and Easter. Substitute ringers are needed due to illness or other obligations of regular group members. New ringers frequently start out as “ringers in training” shadowing an experienced ringer while practicing technique on choir chimes and do not have to perform until they feel comfortable. Prospective members are welcome at any Wednesday rehearsal. Feel free to just sit and watch or you can begin to “shadow” a member on choir chimes. Must be able to lift and hold a handbell weighing 5-8 lbs. and be able to access the balcony, as it is not currently handicapped accessible. A one year commitment is preferred.

CHILDREN'S VOCAL CHOIR

Contact: Mark Ayers, 407.831.1212, x253

E-mail: MAyers@StMaryMagdalen.org

Service(s) Offered: *All children of the Parish in grades 2nd – 8th are encouraged to join the choir to minister through music. The children are trained to read hymns and anthems and how to serve and lead the assembly at weekend Mass. The Children's Choir sings monthly at Mass, alternating between the 5pm Saturday and 12pm Sunday Masses.*

HOW TO GIVE BACK: Children: Rehearsals are on Wednesday afternoons. SMM school students meet at 2pm in front of the school library then are escorted by an adult over to the Church Choir Room. At 3pm, students will come to the Church breezeway to meet parents for pick-up. SMM Religious Education students practice 30 minutes prior to the start of 4pm Wednesday classes, then we go directly to the Church for the opening prayer service. No audition needed.

Adults: This ministry goes from August through May and if there are enough disciples, one should only have to monitor for one month, 1½ hrs per week assisting the director with the children at rehearsals and performances. Anyone with good parental skills is invited to help. Retirees would be great! Rehearsals are on Wednesday after school. Diocesan FBI/FDLE clearance and Safety Environment Training completion required.

CONTEMPORARY CHOIR (6pm Sunday Mass)

Contact: Mark Ayers, 407.831.1212, x253

E-mail: MAyers@StMaryMagdalen.org

Service(s) Offered: *This choir sings at the 6pm Mass and also joins with the other music ministry groups for concerts or special events. Our music selections are Contemporary Christian and are accompanied by a band.*

HOW TO GIVE BACK: The choir is open to age 14 and older. We use drums, guitars (bass, lead and acoustic), flute, violin, piano and trumpet. Band members are accomplished amateur or semi-professional players. Rehearsals are on Sunday at 4:30pm in the church. The director of the Contemporary Choir is Lynn Reyelts. Ministers (volunteers) must have Diocesan FBI/FDLE clearance and complete the Safety Environment Training.

CORO HISPANO (7pm Saturday Spanish Mass)

Contact: Mark Ayers, 407.831.1212, x253

E-mail: MAyers@StMaryMagdalen.org

Service(s) Offered: *The Hispanic Choir sings at the 7PM Saturday Mass and the 7pm Thursday daily Mass.*

HOW TO GIVE BACK: Choir practice is every Thursday, following the evening Spanish Mass from 8pm-9:30pm in the Church. Experience is preferred and instrumentalists are welcomed to participate. The co-directors of the Choir are Manuel Ocampo and Andres Ocampo. The choir performs year round. Diocesan FBI/FDLE clearance and Safety Environment Training completion required.



Eucharistic Adoration/Holy Hour

Holy Hour Contact: Mark Ayers, 407.831.1212, x253

E-mail: MAyers@StMaryMagdalen.org

Eucharistic Adoration: Josephine Ingoglia, 407.921.6097

E-Mail: jo_ingoglia@yahoo.com

Service(s) Offered: *This is a time to spend before the very presence of the Lord exposed in the monstrance. Eucharistic Adoration is held the 1st Friday of each month as well as special times throughout the year. Holy Hour occurs the 1st Tuesday every month at 7pm (August through May).*

HOW TO GIVE BACK: Adorers ensure our Blessed Sacrament is never left alone by spending time with Jesus praying, reading the bible, contemplating acts of faith, hope and charity, giving thanks, praying the rosary, or sitting and saying nothing at all being open to His Love. There is also an opportunity to be involved with the scheduling of adorers so that the Blessed Sacrament is never left alone.

Eucharistic Ministers/Ministros de La Eucaristia

Contact: Mark Ayers, 407.831.1212, x253

E-mail: MAyers@StMaryMagdalen.org

Spanish Contact: Tony Medina, 407.260.5912

E-mail: anthonymed848@aol.com

Service(s) Offered: *Ministers of the Eucharist share the body and blood of Christ with their fellow worshipers in the assembly.*

HOW TO GIVE BACK: Ministers must be a fully initiated Roman Catholic. These individuals must have a willingness to be of service to the community founded in the love of God. You can begin by writing a letter to the Pastor, giving some background information about yourself and why you want to become a Minister. When approved, you then attend a Diocesan training session to receive a two-year mandate from the Bishop. Every two years there is a mandatory "Morning of Reflection" for ongoing training and to renew your mandate. All disciples are scheduled according to their Mass preference.

Grotto Prayer Gathering

SMM staff members gather together weekly at the grotto and pray for our community. All are invited to join us.

Grupo de Oración Carismatico

Contact: Leandro Pichardo, 407.435.6051

E-mail: laixp@justbeautyproducts.com

Service(s) Offered: *We gather around Christ, guided by the Holy Spirit to share the faith and the Christian experience, praising God the Father; transforming lives and building together the image of Jesus according to the Gospel. Friday from 7pm-9:30pm in the San Juan de la Cruz room. There is a retreat for those invited on the first of each month*

HOW TO GIVE BACK: Come and join us.

Hospitality/Greeters

Contact: Arlene G. Magee, 407.332.7677

E-mail: dmagee3@gmail.com

Contact: Patti Golmont, 407.359.4242

E-Mail: pjdraw@aol.com

Contact: Lynne Contrucci, 407.261.0993

E-mail: lynnetrucci@gmail.com

Service(s) Offered: *The Ministry of Welcome, is usually the beginning... Its Ministers or Greeters, identified by red name badges, welcome prior to the happy celebration of Mass and Special Liturgies or Specific Events – from the T&T Festival and Music Ministry Christmas Concert to "Bible Blitz" Scripture Classes, Missions, Living Stations, etc. These fully registered parishioners, Adult and Youth, of St. Mary Magdalen Parish, qualify as Greeters. Any children under the age of 14, must be accompanied by their Greeter Parent(s)/Guardian(s) at their side. Ministers of Hospitality set the tone, lending their warm, welcoming presence to assist in various roles, all interchangeable.*

HOW TO GIVE BACK: Greeters choose their commitment area(s) according to their schedule. Mass Greeters usually serve one hour per week. Additionally, many happily choose to serve Events. All other Greeters should be available for one or more Events or Special Services per year...and may also join in Mass Greeting as easily as showing up! As part of a team effort, prospective Greeters are provided on-the-job, ongoing training to ensure a feeling of comfort in being accessible and available. Diocesan FBI/FDLE clearance and Safety Environment Training completion required. To join, speak to any Greeter about information, sign-up forms, etc. You will be well guided. We invite many to join: ladies, men, the young-at-heart, families with children and teens, also known as Jr. Greeters, etc. Any children under the age of 14, must be accompanied by their Greeter Parent(s)/Guardian(s) at their side. All are Welcome!

Instrumentalists

Contact: Mark Ayers, 407.831.1212, x253

E-mail: MAyers@StMaryMagdalen.org

Service(s) Offered: *To enhance our choirs and worship experience, instrumentalists are an added treat for us.*

HOW TO GIVE BACK: Involves about two hours per week and performances at weekend Masses and special events. Instrumentalists are required to audition and have the ability to read music.

Juan XXIII Grupo de Oración

Contact: Teresa Restrepo, 407.284.9713
E-Mail: terecastr@aol.com

Service(s) Offered: *With a lot of love, obedience and sacrifice, these folks are here to help those who have somehow lost their way to God to help find Him again.*

HOW TO GIVE BACK: They gather once or twice a week 7pm-9pm. Training is provided. Diocesan FBI/FDLE clearance and Safety Environment Training completion required if children are present.

Liturgy of the Word for Children/Liturgia de los Niños

Contact: Jerry Karleskint, 407.327.1046

E-mail: jdmjps1@msn.com

Spanish Contact: Jaime & Miriam Toro, 407.260.1544

E-Mail: torolongwood@aol.com

Service(s) Offered: *Teaches the children about the day's Word and how to apply it into their daily lives. Offered for all children grades K-5 and takes place during Mass at the Saturday 7pm / Sunday 8am, 10am and 12pm Masses.*

HOW TO GIVE BACK: Leaders read the weekly readings with the children, lead a discussion on the theme of the readings and how to apply it in the children's daily lives. Commitment is open and we have sign-ups twice per year, once in August and the other in January. It requires about 1 hour per week when scheduled. All facilitators and teachers must be Diocesan FBI/FDLE cleared and complete the Safety Environment Training.

Ministry for the Deaf

Contact: Christie Scipione, 321.214.5174

E-Mail: cscipione@cfl.rr.com

Text Messaging: 407.375.9558

Contact: Tracy Hanley, 407.296.2206

E-Mail: hanley12@yahoo.com

Service(s) Offered: *This ministry allows the deaf to follow along and participate in the Mass and any other church activities.*

HOW TO GIVE BACK: The interpreters are scheduled for the 10am Mass. Other masses are interpreted by request only. Interpreters are also willing to assist at any other church related functions and actively encourage involvement of the Deaf. Sign language classes are offered to anyone interested. Fluency in ASL is required to be the main interpreter. Occasionally, newsletters and Deaf socials require extra time beyond the prep time needed to interpret the one hour weekend mass. This ministry requires a willingness to learn about the Deaf culture and the spirit to become involved in something different. Diocesan FBI/FDLE clearance and Safety Environment Training completion required.

Our Lady's Rosary Group

Contact: Anne Archer, 407.834.5886

Service(s) Offered: *In prayer, we respond to Our Lady of Medjugorje's messages and pray we will be accepted to bring conversion to all Christians, to our Church, our Country and the world. We spend 1? to 2 hours on Wednesday evenings and have been meeting for 20 years. We are deeply committed to Our Lady of Medjugorje.*

HOW TO GIVE BACK: Join us in prayer. Diocesan FBI/FDLE clearance and Safety Environment Training completion required if children are present.

Parish Life Prayer Ministry

(formerly Individual Prayer Ministry)

Contact: Melissa Findley, 407.831.1212, x268

E-mail: MelissaF@StMaryMagdalen.org

Service(s) Offered: *Monthly prayer for the needs of the many ministries and ministers of our parish community in building up the Kingdom of God.*

HOW TO GIVE BACK: Each month you will receive a list of intentions for you to reflect and pray over. The amount of time you spend and when is up to you.

Prayer Angels

Contact: Marjorie Warren, 407.298.0444

Service(s) Offered: *If you would like our Prayer Angels to pray for a loved one, please contact the parish office.*

HOW TO GIVE BACK: You may dial a number or leave your e-mail address with the parish office if you wish to receive prayer requests. These intentions are simply added to your regular prayer routine. You can spend as much time as is needed and do it at your own convenience.

Readers/Proclamadores de La Palabra

Contact: Mark Ayers, 407.831.1212 ext. 253

E-mail: MAyers@StMaryMagdalen.org

Spanish Contact: Jose Garcia, 407.666.9540

E-Mail: Joseragar2000@yahoo.com

Service(s) Offered: *This ministry provides for the prayerful and powerful proclamation of the Word of God at Sunday Masses and for special liturgical celebrations.*



HOW TO GIVE BACK: You must be a person of great faith and devotion to God's Word. You need to know the effective use of a microphone, careful enunciation, sufficient eye contact, appropriate rate of speech and proper posture and movement. It is important to be able to gain and keep the attention of the listeners and to convey enthusiasm and motivation. Your gift of time will be to read at Mass once a month or more depending on availability of Mass preferences. Readers are required to attend a rehearsal the week prior to their proclamation. You also must attend periodic workshops and training sessions. An audition is required.

Rosario en Familia

Contact: Luis Hernando Ocampo, 407.288.3474

Service(s) Offered: *On Tuesdays at 7pm, you will find this group praying the Rosary in Spanish. The Virgin Mary is taken to different homes each week.*

HOW TO GIVE BACK: Join us in prayer. Diocesan FBI/FDLE clearance and Safety Environment Training completion required if children are present.

Sacristans/Sacristanes

Contact: Al and Joan Floegel, 407.647.4863

E-mail: jfloef@aol.com

Spanish Contact: William & Catalina Nieves, 407.830.7395

Service(s) Offered: *Behind the scenes is a small group of people who do their best to make the Mass or other services meaningful, spiritual and efficient. Assisted by the priests, there is an exact order of things that must be followed. They do everything from turning on the lights to finding the correct readings for the day.*

HOW TO GIVE BACK: Training is provided and one should first be a Eucharistic Minister. Sundays require about two hours and a little less for weekday and daily Masses, First Friday Adoration, Stations of the Cross, funerals, weddings and any other special liturgical celebrations. Commitment varies as to availability and need. Diocesan FBI/FDLE clearance and Safety Environment Training completion required.

Technical Support Ministry

Contact: Mark Ayers, 407.831.1212, x253

E-mail: MAyers@StMaryMagdalen.org

Service(s) Offered: *We are a small group of faithful and dedicated technicians who support other ministries needing assistance with audio and video requests by operating and maintaining a broad array of advanced audio and video equipment installed in the Church and Parish Life Center. Some lifting of audio equipment is required.*

HOW TO GIVE BACK: If you would like to explore the possibilities with us, make some new friends and learn more about our pursuit of excellence, then please join us for our meetings on Monday evenings at 7pm in the St. Cecilia Choir Room (behind the church sanctuary). Diocesan FBI/FDLE clearance and Safety Environment Training completion required.

St. Francis' Pet Blessing

In the spirit of St. Francis, our parishioners are invited to bring their pets to St. Mary Magdalen for a special blessing (takes place in October).

Translations Team

Contact: Mark Ayers, 407.831.1212, x253

E-Mail: MAyers@StMaryMagdalen.org

Spanish Contact: Rosita Jimenez, 321.396.2330

E-Mail: rjimenez@orca-technology.com

Service(s) Offered: *Dynamic group that supports any communication need. Currently, the ministry takes care of translating prayers, announcements or any other liturgical documents. We also translate the PowerPoint presentation of songs and announcements to be shown during Mass.*

HOW TO GIVE BACK: Must be proficient in reading, writing, and speaking both English and Spanish. Other languages welcome for special projects.

Ushers/Ujieres

Contact: Jim Scobey, 407.977-8274

E-mail: jscobey@cfl.rr.com

Spanish Contact: Fernando Silva, 407.466.3519

Spanish Contact: Luis Cruzado, 973.204.7097

Service(s) Offered: *These men and women make Mass at St. Mary Magdalen an enjoyable and beneficial experience for all who attend. They are there to greet and seat people, pass out bulletins, and direct Communion. Other responsibilities include taking-up the collection, straightening up pews after Mass, selecting the honor family and assisting people with health emergencies.*

HOW TO GIVE BACK: Serving as an usher is open to adults over the age of 18. Mature 16-17 year olds may be considered. Men typically wear a coat and tie and the women dress appropriately. Service requires about 1 hour per week and you do not need to serve every week if that is your preference. Diocesan FBI/FDLE clearance and Safety Environment Training completion required.

Wedding Mass Consultant/ Consultor de Masa de boda

The parish extends a helping hand when it comes to planning the wedding Mass so that it is a happy and spiritual event. This person coordinates the couple's individual needs into the Mass.

Live Your God-Given Strengths

STEWARDSHIP &

MISSION ADVANCEMENT MINISTRIES

Bulletin

This is an effort to keep all members of our parish community current in ministry events and general parish information. Announcements must be submitted by Friday at 4pm 9 days prior to the Sunday it should appear. If you wish to have it translated into Spanish, please submit it 17 days (two Thursdays) prior to the Sunday it is to appear.

C.A.S.T. Ministry

Contact: Rebecca Carlton
E-Mail: castministry@yahoo.com

Service(s) Offered: *This ministry is offered to all ages from children to seniors. This is an exciting and artistic ministry that involves many aspects of the arts. Throughout the coming year there will be many events including a dinner theatre show to benefit Habitat for Humanity. We have an art show, Stations of the Cross, Summer production of a well known Broadway Musical, and short skits throughout the year. There are opportunities for acting, singing, music, and dancing. We also need behind the scene talents such as script writing, choreography seamstresses, photography, lighting and sound. Builders and stagehands are a vital part of the shows. There is something for everyone.*

HOW TO GIVE BACK: If you would like to explore your artistic abilities, make new friends, and learn more about the arts while supporting and entertaining the community, then please join us. Diocesan FBI/FDLE clearance and Safety Environment Training completion required.

Christmas Light Tour

Neighbors coming together to showcase their Christmas Lights with a Christian Message. A wonderful opportunity to Evangelize throughout our Community. Parishioners are invited to drive their streets and share in the joy of spreading the message, Jesus is the Reason for the Christmas Season!!

Computer Data Entry

Contact: Lisa Oak, 407.831.1212, x221
E-mail: LOak@StMaryMagdalen.org

Service(s) Offered: *Excellent communication efforts between the Parish and our Parishioners requires an always up-to-date parish record.*

HOW TO GIVE BACK: Support excellent communication efforts by sharing your data input skills. Usually during normal business hours. Training and a congenial atmosphere provided! Diocesan FBI/FDLE clearance and Safety Environment Training completion required.

Connection Café

Contact: Melissa Findley, 407.831.1212, x268
E-Mail: MelissaF@StMaryMagdalen.org

Service(s) Offered: *Welcomes and connects our parishioners with information regarding our various ministries. In addition, they write down inquiries that cannot be addressed during the weekend and forward to the parish office for prompt follow-up.*

HOW TO GIVE BACK: One weekend a month after one or more of the Masses. Some weekends will feature and be staffed by one of our ministries who wish to promote their particular ministry. Refreshments may be served and welcoming is a priority. Qualifications require a big smile and a warm personality. Diocesan FBI/FDLE clearance and Safety Environment Training completion required.

Council of Catholic Women

Contact: Maureen Johnson, 407.430.7366
E-mail: MOJohnson210@hotmail.com

Service(s) Offered: The Council of Catholic Women (CCW) unites women, develops their leadership potential and assists them in speaking and acting upon current issues in the Church and society, both domestically and internationally. CCW participates in fundraising, fellowship & educational activities which bond the women in our community. There are 9 circles that make up CCW. They are as follows:

- *St. Anne (Meets on the 2nd Tuesday of each month at 10am) The focus is a spiritual one. They study scripture and learn more about their Catholic faith so that they may pass that knowledge on to their children. Their fundraiser is the Seder Meal and they also run the Vacation Bible School in the summer.*
- *St. Eamon (Meets the 2nd Monday of each month at 7:30pm) Involved with a variety of projects and causes throughout the year; they continue to help with the Dessert Theater, run the Italian Booth at CommunityFest, support the Peace Orphanage, and sell Lilies and Tulips during the Easter Season to support their favorite charities.*

- St. Gerard (Meets the 2nd Monday of each month at 9:30am) - They hold their general business meeting once a month but also meet weekly during the year for fellowship and crafts. This year they are busy designing decorations and objects for the February Mardi Gras and their own St. Patrick's Day Luncheon. Their endeavors benefit local charities.
- St. Luke (Meets the 2nd Monday of each month at 7:30pm) Involved with outreach programs to include providing Christmas bags with sweat suits and personal care items for some of the Seminole Mental Health Crisis Unit and donations to the Peace Orphanage as well as whatever comes their way through the year. Current plan is to be active with the Coalition for the Homeless, specifically involving women and children.
- St. Paul (Meets the 2nd Tuesday of each month at 9:30am) Supports several local charities including Pathways to Care and The Farm Workers Ministry. They also make crafts for the Fall Festival. Several members are currently serving on the board of the SMMCCW.
- St. Robert (Meets the 2nd Tuesday of each month at 7pm) Many members are currently serving and have been active on the CCW Board and its Committees. They run the Funnel Cake booth at CommunityFest. Their fundraiser is the Seder Meal. Proceeds goes to the Endowment Funds of SMM Parish & School. They also support the SMM Mom's Group.
- St. Theresa (Meets the 2nd Monday of each month at 10:00am) Supports the Healing Arts program. They make crafts for the sick children at Arnold Palmer Hospital. They organize the Valentine's Party for the St. Mary Magdalen Adult Day Care Center.
- St. Vincent de Paul (Meets the 2nd Wednesday of each month at 9:15am) - They host various projects each year to support their favorite local charities. They collect jewelry all year for the booth at the October CommunityFest. They host the Daily Bread in December and write Christmas Cards and mail them out for the homeless. They adopt a family in December presenting them with Christmas presents. They also host the St. Patrick's Day party of the Adult Day Care Center.
- Members At Large - Circle for those who would like to participate in CCW, but cannot attend monthly meetings. These members will receive all of the monthly news through our web page & bulletins, as well as have the opportunity to minister or participate in all circle activities.

HOW TO GIVE BACK: There are 8 circles that make up CCW with different responsibilities and meeting times. They meet monthly, usually at each other's homes. There are no special requirements or training needed to become a member. Diocesan FBI/FDLE clearance and Safety Environment Training completion required if working with finances, children, disabled, or the vulnerable adults of our parish community.

Employment Networking Support Group/ Grupo de Empleo

Contact: Melissa Findley, 407.831.1212, x268

E-mail: MelissaF@StMaryMagdalen.org

Spanish Contact: Deacon Juan Cruz,

E-Mail: JuanC@StMaryMagdalen.org

Service(s) Offered: Brothers and sisters in Christ coming together to network and support one another through sharing their progress, resources, contacts, discussing various employment topics, and fellowship. Held Tuesday's at 7:00pm in English and 8:00pm in Spanish in the St. Ignatius of Loyola room located in the Annex.

HOW TO GIVE BACK: Various opportunities available such as: Searching/forwarding job leads and general resources that meet the needs of those attending, come in as a guest speaker on a pre-approved topic, or offer your assistance in reviewing resumes, cover and thank you letters if the need arises.

Evangelization Team

Contact: Melissa Findley, 407.831.1212, x268

E-mail: MelissaF@StMaryMagdalen.org

Service(s) Offered: Evangelization involves both being a witness to your faith through your daily life and sharing your faith with others. It starts within our parish in building our own discipleship. Then we can reach out to inactive Catholics, non-practicing Catholics and finally the non-baptized.

HOW TO GIVE BACK: If you would like to be part of bringing others to a deeper Christian walk, the team meets for two hours per month to plan and support evangelization retreats, programs, and events. A one year commitment is requested. Skills needed: Love of God and demonstrated commitment to the work of the Church. *Must be a partner in the mission* (see page 2). Training is provided.

Financial Planning Ministry

Contact: Dan Copeland, 407.786.4577

E-mail: dcopeland@ribelin.com

Service(s) Offered: Over the upcoming year, this group will be responsible in discerning and implementing an appropriate program to help our parish family break free from the bondage of consumer debt and develop a financial plan based on Catholic biblical principles.

HOW TO GIVE BACK: Some type of financial planning background desired. Those who wish to become facilitators must be Diocesan FBI/FDLE cleared and complete the Safety Environment Training.

Guardian Angel Society

Contact: Lois Locey, 407.831.1212, x238
E-mail: LLocey@StMaryMagdalen.org

Service(s) Offered: *This society has been created to show appreciation to parishioners, both living and deceased who have remembered our parish in their wills or trusts. They have agreed to be the “Guardian Angels” both on earth and in heaven.*

HOW TO GIVE BACK: A gift of a bequest entitles the donor to membership in this very special group of caring people. These individuals provide for the future of St. Mary Magdalen Parish, our Adult Center, Early Learning Center, Church Ministries and School, and serve as the guardians of our ministries in the everlasting life. A Mass is offered for all our “Guardian Angels” on the feast of the Guardian Angel, October 2nd.

Heavenly Helpers

Contact: Melissa Findley, 407.831.1212, x268
E-mail: MelissaF@StMaryMagdalen.org

Service(s) Offered: *These disciples put in a lot of time and energy to ensure everything is in order behind the scenes at our parish events.*

HOW TO GIVE BACK: Commitment is open-ended. We will call upon you as needs arise. Various skills or interests needed: Decorating, serving, clean-up, kitchen crew, etc. Diocesan FBI/FDLE clearance and Safety Environment Training completion required.

Lay Witness Speaker

Contact: Lois Locey, 407.831.1212, x238
E-mail: LLocey@StMaryMagdalen.org

Service(s) Offered: *Sharing Your Faith Story – Lay witnesses share with the parish their own personal faith experience as it relates to giving. They provide a strong message about giving of one’s gifts (time, talent & financial resources) in gratitude for what God has given them.*

HOW TO GIVE BACK: This is usually a one-time-only experience – speaking at several Masses one weekend during our Stewardship efforts (Time & Talent or Sacrificial Giving). Skills needed: Comfortable speaking to a group about your personal faith story and enthusiasm about your faith. Must be a *partner in the mission* (see page 2). Training is provided.

Men’s Club

Contact: Paul Kelley, 407.260.9747
E-Mail: charterpdk@earthlink.net

Service(s) Offered: *This is an opportunity for the men of our parish to gather together in fellowship, prayer and service to the parish. They meet once a month on Thursdays from 7pm-9pm. Occasionally an outside speaker is invited for the evening.*

HOW TO GIVE BACK: Everyone pitches in to help with scheduling, refreshments and some fundraising. Diocesan FBI/FDLE clearance and Safety Environment Training completion required if working with finances, children, disabled, or the vulnerable adults of our parish community.

Missionary Opportunities

Contact: Melissa Findley, 407.831.1212, x268
E-mail: MelissaF@StMaryMagdalen.org

Service(s) Offered: *Parishioners that serve our community on a local, national, or even an international level.*

HOW TO GIVE BACK: If you are feeling called to serve locally, nationally or even internationally for a one-time act of service or for a longer period of time (up to two years of service) the parish has resources to numerous organizations. If you are considering a career as a Lay Minister in the Church, there are programs that will help you to discern your calling.

Parish Endowment Investment Team

Contact: Lois Locey, 407.831.1212, x238
E-mail: LLocey@StMaryMagdalen.org

Service(s) Offered: *This team is entrusted in developing investment policies and overseeing the parish endowment investments.*

HOW TO GIVE BACK: Time & length of commitment involves meeting at least quarterly for at least two years. Open to parishioners who are *partners in the mission*. Skills needed: Love of God and demonstrated commitment to the work of the Church. A background in financial investing or not-for-profit endowments required.



“Like everyone, you’ve been blessed by God with a deep reservoir of untapped potential. That potential is your talent, waiting to be discovered and put to use in your life.

(Excerpt from “Living Your Strengths”)

Parish Endowment Steering Team

Contact: Lois Locey, 407.831.1212, x238

E-mail: LLocey@StMaryMagdalen.org

Service(s) Offered: *This team is entrusted with the oversight and planning of the St. Mary Magdalen Parish Endowment. Members will work with parish staff to establish goals and benchmarks for the endowment, review the work of the stewardship staff and advise when appropriate. As stewards of the endowment fund, they will make sure the funds are used in the most effective and efficient way possible and will assure donors that the endowment funds are being used exactly as directed.*

HOW TO GIVE BACK: Time commitment involves meeting three-to-four times a year for at least two years. Open to parishioners who are *partners in the mission*. Skills needed: Love of God and demonstrated commitment to the work of the Church. Training is provided.

Prayerful Party Planners/Ministerio de Festividades

Contact: Melissa Findley, 407.831.1212, x268

E-mail: MelissaF@StMaryMagdalen.org

Spanish Contact: Fr. Gilbert Medina, 407.831.1212

Service(s) Offered: *These disciples help build community in our parish by coordinating various receptions, potlucks, picnics and other special events that bring us together.*

HOW TO GIVE BACK: Do you love fun events? If you have organizational skills and/or the “gift” of working well with a team, you can help plan various events for our community. Commitment is open-ended. Various organizing and coordinating skills needed. Projects range from being part of a team to organizing a whole event – depending on your interest!

St. Bernardine Communications Team

Contact: Lois Locey, 407.831.1212, x238

E-mail: LLocey@StMaryMagdalen.org

Service(s) Offered: *The Pastoral Council developed a communications taskforce to improve the way God’s word is communicated throughout the parish. This taskforce, the St. Bernardine Communications Team, mission is to promote the Good News at St. Mary Magdalen Parish. We meet monthly and our promotional works included the following: The Sacrament of Forgiveness/Day of Penance, Corpus Christi Processional, September 11th Eucharistic Healing Service, Publishing the Parish Calendar, Publicizing events, designing the parish’s booth at the Diocese of Orlando’s Festival of Faith, and much, much more.*

HOW TO GIVE BACK: We are looking for a variety of skills: writers, fine artists, marketing skills, photography, graphic artists, planners and good communicators. We meet quarterly (date determined by team) for 2 to 3 hours. We rotate project “leads” or coordinators based on skills, passion and time availability.

CREATIVE/TECHNICAL WRITER

Contact: Melissa Findley, 407.831.1212, x268

E-mail: MelissaF@StMaryMagdalen.org

Service(s) Offered: *This team builds our sense of community by offering their writing skills to enhance communication efforts.*

HOW TO GIVE BACK: You can foster community by contributing your writing skills for various publications within the parish. Projects may include bulletin articles, Making A Difference (the parish “Good News letter”), parish brochures, the Parish Annual Report, etc. Time commitment varies. Guidance is given.

DESKTOP PUBLISHERS/GRAPHIC ARTISTS

Contact: Susi Dring, 407.673.1496

E-mail: susidring@earthlink.net

Service(s) Offered: *A good publication takes more than a keyboard and good ideas. This team produces high quality material through digital design.*

HOW TO GIVE BACK: You can help us produce our flyers, newsletters, brochures, etc. Skills needed: Desktop publishing experience & familiarity with the latest version of Microsoft Word or Microsoft Publisher. Graphic Artists would have experience & familiarity with at least Adobe Creative Suite 3 Design. Time commitment varies. Guidance is given.

FINE ARTISTS

Contact: Susi Dring, 407.673.1496

E-mail: susidring@earthlink.net

Service(s) Offered: *This team of Artists draws, paints, or stencils designs for the various projects of our parish ministries.*

HOW TO GIVE BACK: From time to time, our parish is looking for those with gift and skill of fine art. Time commitment varies. You will be part of an “on-call” artistic team. Guidance will be given.

MINISTERIO DE COMUNICACIONES

Spanish Contact: Francisco Mejia, 407.328.0081

E-Mail: fmejiamojica@yahoo.com

Spanish Contact: Ivan Escobar,

E-Mail: iescobar@orca-technology.com

Service(s) Offered: *We broadcast the Spanish Mass on "Radio Buena Nueva" 104 Thursdays. We also assist with technical support and translations for our Spanish-Speaking ministries. We design and improve our parish website.*

HOW TO GIVE BACK: Time commitment varies. Guidance will be given. Diocesan FBI/FDLE clearance and Safety Environment Training completion required.

PHOTOGRAPHERS

Contact: Pete Ramondetta, 407.463.5816

E-mail: pete@onevisionimages.com

Service(s) Offered: *Our parish photographers attend various parish functions and capture our "Mission in Action" using digital photography.*

HOW TO GIVE BACK: Do you have the gift of photography and are willing to provide assistance on various parish projects? Though having your own camera is helpful, it is not required. Time commitment varies. You will be part of an "on-call" team of photographers. Guidance will be given. Diocesan FBI/FDLE clearance and Safety Environment Training completion required.

POWERPOINT SCRIBES (.pps)

Contact: Ivan Escobar

E-Mail: iescobar@orca-technology.com

Service(s) Offered: *With the growing use of technology within the ministries of the church, we have assembled a team who will create (or assist in creating) Microsoft PowerPoint presentations for those ministries who might be PowerPoint challenged.*

HOW TO GIVE BACK: You can enrich our ministries by contributing your PowerPoint skills for various presentations within the parish. The Technical Support Ministry provides guidelines on styles that work with the Church's new audio/visual system. Time commitment varies as projects arise. Guidance is given. Training provided by the Technical Support Ministry.

WEBSITE TEAM (www.StMaryMagdalen.org)

Contact: Ivan Escobar

E-Mail: iescobar@orca-technology.com

Service(s) Offered: *This team designs and improves our parish website: www.StMaryMagdalen.org through writing, copy-editing, design, web construction and maintenance.*

Sunday Coffee Gathering

Contact: David Weisman, 407.831.2662

E-mail: mdweis2002@yahoo.com

Service(s) Offered: *On the first Sunday of every month you will find a little treat of doughnuts and coffee or juice in the Grotto. Come join us for fellowship!*

HOW TO PARTICIPATE: These ministers set-up and clean-up after each of the morning Masses. It involves about 30 to 40 minutes per month. Training is provided and your help is very much appreciated. Diocesan FBI/FDLE clearance and Safety Environment Training completion required.

Talents, Skills & Professions

Contact: Melissa Findley, 407.831.1212, x268

E-mail: MelissaF@StMaryMagdalen.org

Service(s) Offered: *These individuals offer their God-Given strengths to our parish community.*

HOW TO GIVE BACK: If you have a special talent or know-how that you wish to share with the parish, please let us know. Time commitment varies.

Vocations

Contact: Fr. Ed Thompson, 407.831.1212

Service(s) Offered: *The Eucharist is the source and summit of the life of the Church. Without the Eucharist, there is no Church. In a sacramental way, Christ is present to the Church in the person of the priest. All of the sacraments offer a personal encounter with Christ, and the priest is the one who offers the sacraments. If you are considering the Priesthood, contact us for more information.*

Welcoming Team

Contact: Melissa Findley, 407.831.1212 x268

E-Mail: MelissaF@StMaryMagdalen.org

Service(s) Offered: *Several hundred new families join the St. Mary Magdalen parish every year. Through careful planning and organization we work towards ensuring each and every individual is made to feel invited and welcomed in sharing a life with Christ and his community.*

HOW TO GIVE BACK: We need disciples to plan and execute the "New Parishioner Socials", provide ideas and assistance in enhancing our welcoming procedures, occasionally assist parishioners at the Connection Café (provide tours, etc.), or keep information current. It's a great way to meet new people and develop lasting friendships. Diocesan FBI/FDLE clearance and Safety Environment Training completion required.

Live Your God-Given Strengths

TEMPORAL MINISTRIES

CommunityFest

Contact: Joe Hillebrandt
E-Mail: jmh@cbsorlando.net

Service(s) Offered: *Every Fall, around the end of October, the parish comes together for the biggest social event of the year. In addition to being a successful fundraiser for the parish, this event brings thousands of parishioners together with the community for three days of fun and fellowship offering rides, games, food booths, craft sales, auctions and live entertainment.*

HOW TO GIVE BACK: Many disciples choose to work at one of the various booths with times varying depending on need and availability. Other disciples meet year-round working together as a team to assure that every detail is taken care of. If you are interested in becoming part of the leadership team, please contact the Chairman at the e-mail address above. Diocesan FBI/FDLE clearance and Safety Environment Training completion required.

Education Assistance Discernment Team

This team determines amount awarded to families who wish to receive financial assistance to our St. Mary Magdalen School.

Grotto Environmentalists

Contact: Bill Froehlich, 407.339.2653
E-mail: EFroehlich@cfl.rr.com

Service(s) Offered: *Our Church and Parish Life Center buildings are surrounded by the most beautiful and tranquil gardens, carefully tended by this fine group of people.*

HOW TO GIVE BACK: We mow, edge and trim, spread mulch bark, weed, spray and plant annuals. We maintain our fish pond which is so enjoyed by everyone, especially the children. We dutifully pressure wash and maintain the brick pavers. You will see us every Thursday 8am-10am and every Saturday 7am-8am. We are looking for folks who love to work in the garden. You decide if you want to stay ten weeks or ten years.

Maintenance Martyrs (Grounds/Facilities)

Contact: Kim Maag, 407.831.1212, x227
E-mail: KMaag@StMaryMagdalen.org

Service(s) Offered: *Assists in keeping the grounds, buildings and equipment in such a way so as to provide the highest quality of safety.*

HOW TO GIVE BACK: If you have a special skill or talent, (carpentry, cabinet making, painting, electrician, etc.) there are often special projects that come up where an extra pair of hands would be helpful. Just let us know when you are available and what skill you have. Commitment is open and hours flexible.

Office Angels

Contact: Jo Ann Kuhn, 407.831.1212, x269
E-mail: JKuhn@StMaryMagdalen.org

Service(s) Offered: *There are always plenty of things to be done to keep this parish community informed and running smoothly. This would include bulletin stuffing, preparing and assembling mailings, backup receptionist/assistant (answering the telephone and greeting visitors to the parish) and some computer work.*

HOW TO GIVE BACK: This ministry takes place during normal working hours in the parish office. Training is provided depending on the task. Time commitment.

Pew Gardeners

Contact: Kim Maag, 407.831.1212, x227
E-mail: KMaag@StMaryMagdalen.org

Service(s) Offered: *Are you seeking some quiet time with God, yet want to help maintain His house? This solitude ministry straightens out the racks in the pews each week or during special times of the year.*

HOW TO GIVE BACK: Time varies based on your availability. You may choose to garden the pews once a week for a few hours or after the Masses during special times of the year. Training and supplies provided. Participation as a family is welcomed. Diocesan FBI/FDLE clearance and Safety Environment Training completion required.

Religious Store

The Religious Article Store is located at the rear of the church and is open after all weekend Masses. There is a variety of religious articles, books, crucifixes, Bibles etc. Seasonal items include Christmas cards and First Communion gifts. Special orders are also provided for items not in the store.

Live Your God-Given Strengths

AUXILIARY MINISTRIES

Irish-American Cultural Society

Contact: Jack & Eileen Burbridge, 407.339.6432

Service(s) Offered: *A lively group that means to further the Irish culture and to foster fellowship amongst its members. This is an outreach group as many are not members of St. Mary Magdalen Parish. What a terrific way to show them what we are all about.*

HOW TO GIVE BACK: We meet the 2nd Sunday of every month at 1:30pm at the St. Mary Magdalen School Cafeteria. Changes to location will be posted in the bulletin. We host various events such as the St. Patrick's Day Dinner & Dance, sponsor awards to children for best essays on Ireland, etc. Diocesan FBI/FDLE clearance and Safety Environment Training completion required if working with finances, children, disabled, or the vulnerable adults of our parish community.

Knights of Columbus

Contact: Bob Rasch, 407.865.7473

E-Mail: rwrash@earthlink.net

Service(s) Offered: *The Knights of Columbus is a fraternal organization of Catholic men age 18 yrs. old and up whose watch words are "Charity, Unity, Fraternity, and Patriotism."*

HOW TO GIVE BACK: The Knights support charities throughout the parish and community. They work with the parish priest and support religious vocations. Becoming a Knight gives a man the opportunity to be a part of a special group of men organized by a "Parish Priest" Father Michael McGivney in 1882. Membership in the Knights is an opportunity to become a better Catholic, to grow within yourself, and foster responsibility and leadership within the Catholic Community. Diocesan FBI/FDLE clearance and Safety Environment Training completion required if working with finances, children, disabled, or the vulnerable adults of our parish community.



Our individual lives as disciples and stewards must be seen in relation to God's larger purposes. From the outset of his covenanting, God had it in mind to make many one.

In Jesus, the Kingdom of God is inaugurated – a kingdom open to all. Those who enter into Jesus' New Covenant find themselves growing in a union of minds and hearts with others who also have responded to God's call. They find their hearts and minds expanding to embrace all men and women, especially those in need, in a communion of mercy and love.

~ Stewardship: A Disciple's Response, U.S. Bishops' Pastoral Letter on Stewardship



INDEX

Adult Center	9	Faith Community Nursing	11	PowerPoint Scribes	23
Acts 29	3	Faith Formation Commission	3	Prayer Angels	17
Altar Linens Society	14	Family Services	11	Prayer Blanket Team	12
Altar Servers/Monaguillos	14	Finance Council	2	Prayerful Party Planners/ Ministerio de Festividades	22
Alzheimer's Support Group	10	Financial Planning Ministry	21	Prison Family Support Group	13
Angels Among Us	10	Fine Artists	22	RCIA Adult Sacramental Catechesis	6
Art & Environment	14	FOCCUS Ministry	4	Readers/Proclamadores de La Palabra	18
Baptism Preparation/ Preparacion de Bautizo	3	Formación Permanente	4	Religious Education K-8/ Sacramental Preparation	6
Bereavement (Funerales) Team	10	Great Date Night	4	Religious Store	24
Bible Blitz	3	Grief Support Group	11	Respect Life	13
Bible Study	3	Grotto Environmentalists	24	Rosario en Familia	18
Blood Bank Donor	10	Grotto Prayer Gathering	16	Sacristans/Sacristanes	18
Bulletin	19	Grupo de Oración Carismatico	16	School Commission	7
C.A.S.T. Ministry	19	Guardian Angel Society	21	Scouts - Boy Scouts	7
Catholic Youth League	7	Habitat for Humanity	11	Scouts - Cub Scouts	8
CCW - Members At Large Circle	20	Heavenly Helpers	21	Scouts - Girl Scouts, Daisies, Brownies	8
CCW - St. Anne Circle	20	Hospitality/Greeters	16	Talents, Skills & Professions	23
CCW - St. Eamon Circle	20	Income Tax Counseling	12	Social Ministries Commission	9
CCW - St. Gerard Circle	20	Instrumentalists	16	St. Bernadine Communications Team	22
CCW - St. Luke Circle	20	Irish-American Cultural Society	25	St. Francis' Pet Blessing	18
CCW - St. Paul Circle	20	Juan XXIII Grupo de Oración	17	SMM Catholic School	8
CCW - St. Robert Circle	20	Just Faith	12	SMM Home & School Association	8
CCW - St. Theresa Circle	20	K.I.S.S.M.	12	SMM Mustang Club	8
CCW - St. Vincent de Paul Circle	20	Kids-4-Jesus	42	SMM Night of Dreams Auction	9
Celebrate Marriage Sunday	14	Knights of Columbus	252	SMM Pre-School	9
Centering Prayer/Oración Centrante	14	Lay Witness Speaker	21	Stewardship Council	2
Choir - Adult Choir (10am)	15	Liturgy of the Word for Children/ Liturgia de los Niños	17	Stewardship Development Team	2
Choir - Adult Handbell	15	Maintenance Martyrs	24	Sunday Bus Drivers	13
Choir - Children's Choir Adult Disciples	15	Marriage Encounter/Renovación Conyugal	5	Sunday Coffee Gathering	23
Choir - Children's Vocal Choir	15	Men's Club	21	Technical Support Ministry	18
Choir - Contemporary	15	Men's Morning Bible Study	5	Thanksgiving Feast	13
Choir - Coro Hispano	15	Ministerio de Comunicaciones	23	Time & Talent Team	2
Christ Renews our Community (CROC)	3	Ministry for the Deaf	17	Translations Team	18
Christmas Light Tour	19	Ministry to the Sick/ Ministerio de Los Enfermos	12	Ushers/Ujieres	18
Coalition for the Homeless	10	Ministry of Mothers Sharing (MOMs)	5	Vacation Bible School	7
CommunityFest	24	Missionary Opportunities	21	Vocations	23
Computer Data Entry	19	Natural Family Planning	5	Website Team	23
Connection Café	19	New Beginnings	5	Wedding Mass Consultant	19
Creative/Technical Writer	22	Niños En Acción	5	Wednesday Retired Parishioners	13
Cursillo Ultreya	4	Office Angels	24	Welcoming Team	23
Desktop Publishers/Graphic Artists	22	Our Lady's Rosary Group	17	Worship Commission	14
Dial-A-Smile	11	Parish Advocate for the Elderly	12	Youth Ministry (Life Teen)	7
Drivers Safety Program	11	Parish Endowment Investment Team	22	Youth Ministry (The Edge)	7
Easter Egg Hunt	4	Parish Endowment Steering Team	22		
Education Assist. Discernment Team	24	Parish Event Childcare	6		
Employment Networking Support Group/ Grupo de Empleo	20	Parish Life Prayer Ministry	17		
Eucharistic Adoration/Holy Hour	16	Pastoral Council	2		
Eucharistic Ministers/ Ministros de La Eucaristia	16	Pew Gardeners	24		
Evangelization Team	20	Photographers	23		

CALENDAR OF MINISTERING ACTIVITIES

Weekly Activities	Seasonal Activities	Minister (Volunteer) Convenience or Project-Based
<p align="center">Sunday</p>	<p align="center">January</p>	<p>Adult Center <i>p.9</i></p>
<p>Connection Café (after weekend Masses) <i>p.19</i> Contemporary Choir Rehearsal (4:30pm) <i>p.15</i> Baptism – English-speaking (1:15pm) <i>p.3</i> Irish American Cultural Society (1:30pm) <i>p.25</i> Life Teen (7:30-9pm-School Year.) <i>p.7</i> Baptism – Spanish Speaking (2:15pm) <i>p.3</i> Sunday Bus Drivers (10am Mass) <i>p.13</i> Sunday Coffee Gathering (after Masses) <i>p.23</i></p>	<p>Celebrate Marriage Sunday <i>p.14</i></p>	<p>Art & Environment <i>p.14</i></p>
<p align="center">Monday</p>	<p align="center">February</p>	<p>Blood Bank Donor <i>p.10</i></p>
<p>Alzheimer’s Support Group (7:30pm-9:00pm) <i>p.10</i> Angels Among Us (6-7:30pm) Sept-May <i>p.10</i> Bible Blitz (7:00pm-8:00pm) <i>p.3</i> Boy Scouts (7:30pm-8:30pm) <i>p.7</i> Centering Prayer (7pm-8:30pm) <i>p.14</i> Confirmation of Young Adults (6:30-9:00pm-Fall) <i>p.6</i> Men’s Morning Bible Study (7am-8am) <i>p.5</i> New Beginnings (7pm-9pm) Phase I Starts Nov. <i>p.5</i> St. Eamon Circle(CCW) (7:30pm) <i>p.20</i> St. Gerard Circle(CCW) (9:30am) <i>p.20</i> St. Luke Circle(CCW) (7:30pm) <i>p.20</i> St. Theresa Circle(CCW) (10:00am) <i>p.20</i> Technical Support Ministry (7pm) <i>p.18</i></p>	<p>SMM Night of Dreams Auction, <i>p.9</i></p>	<p>Computer Data Entry <i>p.19</i></p>
<p align="center">Tuesday</p>	<p align="center">April</p>	<p>Dial-A-Smile <i>p.11</i></p>
<p>Bible Study (7:30am-8:15am) <i>p.3</i> Employment Networking Support Group (10am) <i>p.20</i> 1st Communion Preparation (6:00-8:00pm-Spring) <i>p.6</i> 1st Reconciliation Preparation (6:00-8:00pm-Fall) <i>p.6</i></p>	<p>Easter Egg Hunt <i>p.4</i></p>	<p>Creative/Technical Writer <i>p.22</i></p>
<p>Oracion Centrante (7pm) <i>p.14</i></p>	<p align="center">June</p>	<p>Desktop Publishers/Graphic Artist <i>p.22</i></p>
<p>Rosarios en Familia (7pm) <i>p.18</i> St. Anne Circle(CCW) (10:00am) <i>p.20</i> St. Paul Circle(CCW) (9:30am) <i>p.20</i> St. Robert Circle(CCW) (7:00pm) <i>p.20</i> Youth Ministry Edge Team (7-8:30pm) <i>p.7</i></p>	<p>Vacation Bible School <i>p.7</i></p>	<p>Fine Artists <i>p.22</i></p>
<p align="center">Wednesday</p>	<p align="center">August</p>	<p>Guardian Angel Society <i>p.21</i></p>
<p>Adult Choir Rehearsal (7:30-9:00pm) <i>p.15</i> Adult Handbell Choir Rehearsal (5:30-7pm) <i>p.15</i> Children’s Choir Adult Disciples (after school) <i>p.15</i> Children’s Choir Rehearsal (2-3:00pm) <i>p.15</i> Children’s Choir RE Rehearsal (3:30-4pm) <i>p.15</i> K-8 Religious Ed. (4:00-5:30pm-Sept to May) <i>p.6</i> Our Lady’s Rosary Group <i>p.17</i> St. Vincent de Paul Circle (CCW) (9:15am) <i>p.20</i> Wednesday Retired Parishioners (1-4pm) <i>p.13</i></p>	<p>CROC Men’s Retreat <i>p.3</i></p>	<p>Heavenly Helpers <i>p.21</i></p>
<p align="center">Thursday</p>	<p align="center">September</p>	<p>Instrumentalists <i>p.16</i></p>
<p>Coro Hispano Rehearsal (8-9:30pm) <i>p.15</i> Grief Support Group (10am) <i>p.11</i> Grotto Environmentalists (8-10am) <i>p.24</i> Income Tax Counseling (Feb - April) <i>p.12</i></p>	<p>CROC Women’s Retreat <i>p.3</i></p>	<p>Just Faith, <i>p.12</i></p>
<p align="center">Friday</p>	<p align="center">October</p>	<p>KISSM <i>p.12</i></p>
<p>Grupo de Oración Carismático (7-9:30pm) <i>p.16</i> Niños En Acción (6:30pm) 1st & 3rd Friday <i>p.5</i> Oracion Centrante (10am) <i>p.14</i></p>	<p>CommunityFest (Involved a day to year long) <i>p.24</i></p>	<p>Maintenance Martyrs <i>p.24</i></p>
<p align="center">Saturday</p>	<p align="center">November</p>	<p>Missionary Opportunities, <i>p.21</i></p>
<p>Grotto Environmentalists (7-8am) <i>p.24</i> Habitat for Humanity (Jan - April) <i>p.11</i> K-8 Religious Ed. (9:15-10:45am-Sept to May) <i>p.6</i> Liturgia de los Niños (7pm) <i>p.17</i> Prison Family Support Group <i>p.13</i></p>	<p>St. Francis’ Pet Blessing, <i>p.18</i></p>	<p>Office Angels <i>p.24</i></p>
	<p align="center">December</p>	<p>Pew Gardeners <i>p.24</i></p>
	<p align="center">Monthly</p>	<p>Photographers <i>p.23</i></p>
	<p>Acts 29 (7-9pm) Monday <i>p.3</i></p>	<p>PowerPoint Scribes <i>p.23</i></p>
	<p>Coalition for the Homeless (5-8pm) <i>p.10</i></p>	<p>Prayer Angels <i>p.17</i></p>
	<p>Cursillo Ultreya (7:30-9:30pm-3rd Friday) <i>p.4</i></p>	<p>Prayer Blanket Team <i>p.12</i></p>
	<p>Cursillo Ultreya Retreat <i>p.4</i></p>	<p>Prayerful Party Planners <i>p.22</i></p>
	<p>Eucharistic Adoration <i>p.16</i></p>	<p>SMM Pre-School. <i>p.9</i></p>
	<p>Evangelization Team <i>p.20</i></p>	<p>Talents, Skills & Professions, <i>p.23</i></p>
	<p>Faith Formation Commission <i>p.3</i></p>	<p>Translations Team <i>p.18</i></p>
	<p>Finance Council <i>p.2</i></p>	<p>Website Team <i>p.23</i></p>
	<p>Holy Hour (7pm) <i>p.16</i></p>	
	<p>Kids-4-Jesus <i>p.4</i></p>	
	<p>Marriage Encounter <i>p.5</i></p>	
	<p>Men’s Club (7-9pm) <i>p.21</i></p>	
	<p>Pastoral Council <i>p.2</i></p>	
	<p>School Commission <i>p.7</i></p>	
	<p>SMM Home & School Association <i>p.8</i></p>	
	<p>Social Ministries Commission <i>p.9</i></p>	
	<p>Stewardship Council <i>p.2</i></p>	
	<p>Time & Talent Team <i>p.2</i></p>	
	<p align="center">Quarterly</p>	
	<p>Parish Endowment Investment Team <i>p.21</i></p>	
	<p>Parish Endowment Steering Team <i>p.22</i></p>	
	<p>St. Bernardine Communications Team <i>p.22</i></p>	
	<p>Worship Commission (Seasonally) <i>p.14</i></p>	
	<p align="center">During Mass</p>	
	<p>Adult Choir (10am Mass) <i>p.15</i></p>	
	<p>Altar Servers <i>p.14</i></p>	
	<p>Contemporary Choir (6pm Mass) <i>p.15</i></p>	
	<p>Coro Hispano (7pm) <i>p.15</i></p>	
	<p>Eucharistic Ministers <i>p.16</i></p>	
	<p>Hospitality/Greeters <i>p.16</i></p>	
	<p>Lay Witness Speaker <i>p.21</i></p>	
	<p>Liturgy 4 Children (8am, 10am, &12pm) <i>p.17</i></p>	
	<p>Ministry for the Deaf (10am Mass) <i>p.17</i></p>	
	<p>Readers <i>p.17</i></p>	
	<p>Religious Store <i>p.25</i></p>	
	<p>Ushers <i>p.18</i></p>	

Activities w/varying or unspecified days/times

- Altar Linens (Every 3rd Month) *p.14*
- Bereavement Team *p.10*
- C.A.S.T. *p.19*
- Cub Scouts *p.8*
- Family Services *p.11*
- FOCCUS Ministry *p.4*
- Formación Permanente *p.4*
- Girl Scouts/Brownies/Daisies *p.8*
- Great Date Night (3x a yr.) *p.4*
- Juan XXIII Prayer Group *p.17*
- Knights of Columbus *p.25*
- Members at Large (CCW) *p.20*
- Ministry of Mothers Sharing-MOMS *p.5*
- Ministry to the Sick *p.12*
- Natural Family Planning *p.5*
- Parish Advocate for the Elderly *p.12*
- Parish Event Childcare *p.6*
- RCIA Adult Sacramental Catechesis *p.6*
- Respect Life *p.13*
- Sacristans *p.18*
- SMM Catholic School *p.8*
- Wedding Mass Consultant *p.18*
- Welcoming Team *p.23*



Time & Talent

Fostering Stewardship as a way of life

TIME & TALENT DISCIPLESHIP COMMITMENT (AGES 18+)

Instructions:

Please complete (**Sign-up as an individual; we would appreciate each family member completing a separate form**) and return to the parish. Mark I, C, or L in the appropriate column to the right of each opportunity to indicate your status in a specific ministry program and desire to be contacted by a pastoral leader to discuss your participation in that ministry.

(I = Interested, C = Continued Involvement, or L = Leaving the Ministry)

(If you wish to receive services from any ministry below, please contact the Chairperson directly.)

Individual Name: _____

Address: _____

Home Phone: _____ **Cell:** _____ **Work:** _____

E-Mail: _____ **Best Time to Call:** _____ **Which Mass do you regularly attend?**

5pm Sat. 7pm Sat. (Spanish) 8am Sun. 10am Sun. Noon Sun. 6pm Sun.

PASTORAL LEADERSHIP (Page 2)

Pastoral Council Disciple I C L
Finance Council Disciple I C L
Stewardship Council Disciple I C L

FAITH FORMATION MINISTRIES (Pages 3 through 7)

Faith Formation Commission Disciple I C L
Acts 29 Disciple I C L
Baptism (Bautizo) Preparation Disciple I C L
Bible Blitz Disciple I C L
Bible Study Disciple I C L
Christ Renews Our Community Disciple I C L
Cursillo Ultreya Disciple I C L
FOCCUS Ministry Disciple I C L
Formación Permanente Disciple I C L
Great Date Night Disciple I C L
Kids-4-Jesus Disciple I C L
Men's Bible Study Prayer Disciple I C L
Ministry of Mothers Sharing Disciple I C L
Natural Family Planning Disciple I C L
New Beginnings Disciple I C L
Niños En Acción Disciple I C L
Parish Event Childcare Disciple I C L
R.C.I.A Sponsor Disciple I C L
Religious Education Catechist Disciple I C L
Vacation Bible School Disciple I C L
Youth Ministry Disciple I C L

SCHOOL MINISTRIES (Pages 7 through 9)

School Commission I C L
Pre-School Disciple I C L
School Alumni I C L
School Auction Disciple I C L
School Disciple I C L
School - Home & School Assoc. Disciple I C L

SOCIAL MINISTRIES (Pages 9 through 13)

Social Ministries Commission Disciple I C L
Adult Center Disciple I C L
Alzheimer's Support Group Disciple I C L
Liturgy for Children (Liturgia de los Niños) I C L
Ministry for the Deaf Disciple I C L

Angels Among Us Disciple I C L
Bereavement (Funerales) Team Disciple I C L
Blood Bank Donor Disciple I C L
Coalition for the Homeless Disciple I C L
Dial-A-Smile Disciple I C L
Faith Community Nursing Disciple I C L
Family Services Disciple I C L
Grief Support Group Disciple I C L
Habitat for Humanity Disciple I C L
Income Tax Counseling Disciple I C L
Just Faith Disciple I C L
K.I.S.S.M. Disciple I C L
Ministry to the Sick (Ministerio de Enfermos) I C L
Parish Advocate for the Elderly Disciple I C L
Prayer Blanket Team Disciple I C L
Prison Family Support Group Disciple I C L
Respect Life Disciple I C L
Sunday Bus Driver Disciple I C L
Thanksgiving Feast Disciple I C L
Wednesday Retired Parishioners Disciple I C L

WORSHIP MINISTRIES (Pages 14 through 18)

Worship Commission Disciple I C L
Altar Linens Society Disciple I C L
Altar Servers Leader Disciple I C L
Art & Environment Disciple I C L
Celebrate Marriage Sunday Disciple I C L
Centering Prayer (Oración Centrante) I C L
Choir - Adult (10am Sunday) Disciple I C L
Choir - Adult Handbell Disciple I C L
Choir - Children's Adult Disciple I C L
Choir - Contemporary Disciple I C L
Choir - Coro Hispano Disciple I C L
Eucharistic Adoration/Holy Hour Disciple I C L
Grupo de Oración Carismático Disciple I C L
Hospitality/Greeters Disciple I C L
Instrumentalists Disciple I C L
Juan XXIII Prayer Disciple I C L
Lay Witness Speaker Disciple I C L
Men's Club Disciple I C L

TIME & TALENT DISCIPLESHIP COMMITMENT (AGES 18+)

Our Lady's Rosary Group Prayer Disciple	<input type="radio"/>	<input type="radio"/>	<input type="radio"/>	Missionary Opportunities Disciple	<input type="radio"/>	<input type="radio"/>	<input type="radio"/>
Parish Life Prayer Disciple (US Mail)	<input type="radio"/>	<input type="radio"/>	<input type="radio"/>	Parish Endow Investment Team Disciple	<input type="radio"/>	<input type="radio"/>	<input type="radio"/>
Parish Life Prayer Disciple (E-mail)	<input type="radio"/>	<input type="radio"/>	<input type="radio"/>	Parish Endow Steering Team Disciple	<input type="radio"/>	<input type="radio"/>	<input type="radio"/>
Prayer Angels Disciple	<input type="radio"/>	<input type="radio"/>	<input type="radio"/>	Prayerful Party Planners Disciple	<input type="radio"/>	<input type="radio"/>	<input type="radio"/>
Readers Disciple	<input type="radio"/>	<input type="radio"/>	<input type="radio"/>	Professional Skill/Talent _____	<input type="radio"/>	<input type="radio"/>	<input type="radio"/>
Rosario en Familia Prayer Disciple	<input type="radio"/>	<input type="radio"/>	<input type="radio"/>				
Sacristans Disciple	<input type="radio"/>	<input type="radio"/>	<input type="radio"/>	St. Bernardine (SB) Commun. Disciple	<input type="radio"/>	<input type="radio"/>	<input type="radio"/>
Technical Support Ministry Disciple	<input type="radio"/>	<input type="radio"/>	<input type="radio"/>	SB Creative/Technical Writer Disciple	<input type="radio"/>	<input type="radio"/>	<input type="radio"/>
Translations Team Disciple	<input type="radio"/>	<input type="radio"/>	<input type="radio"/>	SB Desktop Publishers/Graphics Disciple	<input type="radio"/>	<input type="radio"/>	<input type="radio"/>
Ushers (Ujieres) Disciple	<input type="radio"/>	<input type="radio"/>	<input type="radio"/>	SB Fine Artist Disciple	<input type="radio"/>	<input type="radio"/>	<input type="radio"/>
STEWARDSHIP MINISTRIES (Pages 19 through 23)				SB Ministerio de Comunicaciones Disciple	<input type="radio"/>	<input type="radio"/>	<input type="radio"/>
C.A.S.T. Ministry Disciple	<input type="radio"/>	<input type="radio"/>	<input type="radio"/>	SB Photographer Disciple	<input type="radio"/>	<input type="radio"/>	<input type="radio"/>
CCW/St. Anne Circle Disciple	<input type="radio"/>	<input type="radio"/>	<input type="radio"/>	SB PowerPoint Scribe Disciple	<input type="radio"/>	<input type="radio"/>	<input type="radio"/>
CCW/St. Eamon Circle Disciple	<input type="radio"/>	<input type="radio"/>	<input type="radio"/>	Stewardship Develop. Team Disciple (p.2)	<input type="radio"/>	<input type="radio"/>	<input type="radio"/>
CCW/St. Gerard Circle Disciple	<input type="radio"/>	<input type="radio"/>	<input type="radio"/>	Sunday Coffee Gathering Disciple	<input type="radio"/>	<input type="radio"/>	<input type="radio"/>
CCW/St. Luke Circle Disciple	<input type="radio"/>	<input type="radio"/>	<input type="radio"/>	Time & Talent Team Disciple (p.2)	<input type="radio"/>	<input type="radio"/>	<input type="radio"/>
CCW/St. Paul Circle Disciple	<input type="radio"/>	<input type="radio"/>	<input type="radio"/>	Vocations Disciple	<input type="radio"/>	<input type="radio"/>	<input type="radio"/>
CCW/St. Robert Circle Disciple	<input type="radio"/>	<input type="radio"/>	<input type="radio"/>	Welcoming Team Disciple	<input type="radio"/>	<input type="radio"/>	<input type="radio"/>
CCW/St. Theresa Circle Disciple	<input type="radio"/>	<input type="radio"/>	<input type="radio"/>	TEMPORAL MINISTRIES (Page 24)			
CCW/St. Vincent de Paul Circle Disciple	<input type="radio"/>	<input type="radio"/>	<input type="radio"/>	CommunityFest Disciple	<input type="radio"/>	<input type="radio"/>	<input type="radio"/>
CCW/Members At-Large Disciple	<input type="radio"/>	<input type="radio"/>	<input type="radio"/>	Grotto Environmentalists Disciple	<input type="radio"/>	<input type="radio"/>	<input type="radio"/>
Computer Data Entry Disciple	<input type="radio"/>	<input type="radio"/>	<input type="radio"/>	Maintenance Martyrs Disciple	<input type="radio"/>	<input type="radio"/>	<input type="radio"/>
Connection Café Disciple	<input type="radio"/>	<input type="radio"/>	<input type="radio"/>	Office Angels Disciple	<input type="radio"/>	<input type="radio"/>	<input type="radio"/>
Employment Networking Support Group	<input type="radio"/>	<input type="radio"/>	<input type="radio"/>	Pew Gardeners Disciple	<input type="radio"/>	<input type="radio"/>	<input type="radio"/>
Evangelization Team Disciple	<input type="radio"/>	<input type="radio"/>	<input type="radio"/>	Religious Store Disciple	<input type="radio"/>	<input type="radio"/>	<input type="radio"/>
Financial Planning Ministry Disciple	<input type="radio"/>	<input type="radio"/>	<input type="radio"/>	AUXILIARY MINISTRIES (Page 25)			
Guardian Angel Society Disciple	<input type="radio"/>	<input type="radio"/>	<input type="radio"/>	Irish-American Cultural Society Disciple	<input type="radio"/>	<input type="radio"/>	<input type="radio"/>
Heavenly Helpers Disciple	<input type="radio"/>	<input type="radio"/>	<input type="radio"/>	Knights of Columbus Disciple	<input type="radio"/>	<input type="radio"/>	<input type="radio"/>

YOUTH 12 & UNDER TIME & TALENT COMMITMENT

Altar Servers (5 th Grade & Up) Disciple	<input type="radio"/>	<input type="radio"/>	<input type="radio"/>	(Birth Date: _____)	<input type="radio"/>	<input type="radio"/>	<input type="radio"/>
Children's Choir Disciple	<input type="radio"/>	<input type="radio"/>	<input type="radio"/>	Niños en Acción	<input type="radio"/>	<input type="radio"/>	<input type="radio"/>
CommunityFest Disciple	<input type="radio"/>	<input type="radio"/>	<input type="radio"/>	Pew Gardeners Disciple	<input type="radio"/>	<input type="radio"/>	<input type="radio"/>
Early Learning Center Student	<input type="radio"/>	<input type="radio"/>	<input type="radio"/>	Religious Education Student	<input type="radio"/>	<input type="radio"/>	<input type="radio"/>
Eucharistic Adoration Prayer Disciple	<input type="radio"/>	<input type="radio"/>	<input type="radio"/>	Scouts _____	<input type="radio"/>	<input type="radio"/>	<input type="radio"/>
Individual Prayer Disciple	<input type="radio"/>	<input type="radio"/>	<input type="radio"/>	St. Mary Magdalen School Student	<input type="radio"/>	<input type="radio"/>	<input type="radio"/>
Kids-4-Jesus	<input type="radio"/>	<input type="radio"/>	<input type="radio"/>	Thanksgiving Feast Disciple	<input type="radio"/>	<input type="radio"/>	<input type="radio"/>
Liturgy of the Word for Children	<input type="radio"/>	<input type="radio"/>	<input type="radio"/>	The Edge Middle School Youth Ministry	<input type="radio"/>	<input type="radio"/>	<input type="radio"/>
				Vacation Bible School	<input type="radio"/>	<input type="radio"/>	<input type="radio"/>

YOUTH (AGES 13 – 17) TIME & TALENT COMMITMENT

Art & Environment Disciple	<input type="radio"/>	<input type="radio"/>	<input type="radio"/>	(Birth Date: _____)	<input type="radio"/>	<input type="radio"/>	<input type="radio"/>
Bible Blitz Disciple	<input type="radio"/>	<input type="radio"/>	<input type="radio"/>	Life Teen High School Youth Ministry	<input type="radio"/>	<input type="radio"/>	<input type="radio"/>
Coalition for the Homeless Disciple	<input type="radio"/>	<input type="radio"/>	<input type="radio"/>	Niños en Acción Disciple	<input type="radio"/>	<input type="radio"/>	<input type="radio"/>
CommunityFest Disciple	<input type="radio"/>	<input type="radio"/>	<input type="radio"/>	Parish Event Childcare Disciple	<input type="radio"/>	<input type="radio"/>	<input type="radio"/>
Computer Data Entry Disciple	<input type="radio"/>	<input type="radio"/>	<input type="radio"/>	Pew Gardeners Disciple	<input type="radio"/>	<input type="radio"/>	<input type="radio"/>
Connection Café Disciple	<input type="radio"/>	<input type="radio"/>	<input type="radio"/>	Photographers Disciple	<input type="radio"/>	<input type="radio"/>	<input type="radio"/>
Choir Disciple _____	<input type="radio"/>	<input type="radio"/>	<input type="radio"/>	Prayer Angels Disciple	<input type="radio"/>	<input type="radio"/>	<input type="radio"/>
Pre-School Disciple	<input type="radio"/>	<input type="radio"/>	<input type="radio"/>	Prayer Blanket Team Disciple	<input type="radio"/>	<input type="radio"/>	<input type="radio"/>
Eucharistic Adoration Disciple	<input type="radio"/>	<input type="radio"/>	<input type="radio"/>	Prayerful Party Planners Disciple	<input type="radio"/>	<input type="radio"/>	<input type="radio"/>
Eucharistic Minister Disciple	<input type="radio"/>	<input type="radio"/>	<input type="radio"/>	Readers Disciple	<input type="radio"/>	<input type="radio"/>	<input type="radio"/>
Scouts _____	<input type="radio"/>	<input type="radio"/>	<input type="radio"/>	Religious Education Candidate	<input type="radio"/>	<input type="radio"/>	<input type="radio"/>
Habitat for Humanity (Ages 16+) Disciple	<input type="radio"/>	<input type="radio"/>	<input type="radio"/>	Respect Life Disciple	<input type="radio"/>	<input type="radio"/>	<input type="radio"/>
Hospitality/Greeters Disciple	<input type="radio"/>	<input type="radio"/>	<input type="radio"/>	SMM School Support Disciple	<input type="radio"/>	<input type="radio"/>	<input type="radio"/>
Individual Prayer (By Mail) Disciple	<input type="radio"/>	<input type="radio"/>	<input type="radio"/>	Sunday Coffee Gathering Disciple	<input type="radio"/>	<input type="radio"/>	<input type="radio"/>
Instrumentalist Disciple	<input type="radio"/>	<input type="radio"/>	<input type="radio"/>	Thanksgiving Feast Disciple	<input type="radio"/>	<input type="radio"/>	<input type="radio"/>
Kids-4-Jesus Disciple	<input type="radio"/>	<input type="radio"/>	<input type="radio"/>	Ushers (Ages 16 & 17) Disciple	<input type="radio"/>	<input type="radio"/>	<input type="radio"/>
Lay Witness Speaker Disciple	<input type="radio"/>	<input type="radio"/>	<input type="radio"/>	Vacation Bible School Disciple	<input type="radio"/>	<input type="radio"/>	<input type="radio"/>
				Welcoming Team Disciple	<input type="radio"/>	<input type="radio"/>	<input type="radio"/>

I am not sure where to serve. I would like to speak with someone in discerning the right fit.

I need or would like to recommend a service not listed in this book: _____



Time & Talent

Fostering Stewardship as a way of life

TIME & TALENT DISCIPLESHIP COMMITMENT (AGES 18+)

Instructions:

Please complete (**Sign-up as an individual; we would appreciate each family member completing a separate form**) and return to the parish. Mark I, C, or L in the appropriate column to the right of each opportunity to indicate your status in a specific ministry program and desire to be contacted by a pastoral leader to discuss your participation in that ministry.

(I = Interested, C = Continued Involvement, or L = Leaving the Ministry)

(If you wish to receive services from any ministry below, please contact the Chairperson directly.)

Individual Name: _____

Address: _____

Home Phone: _____ **Cell:** _____ **Work:** _____

E-Mail: _____ **Best Time to Call:** _____ **Which Mass do you regularly attend?**

5pm Sat. 7pm Sat. (Spanish) 8am Sun. 10am Sun. Noon Sun. 6pm Sun.

PASTORAL LEADERSHIP (Page 2)

Pastoral Council Disciple I C L
Finance Council Disciple I C L
Stewardship Council Disciple I C L

FAITH FORMATION MINISTRIES (Pages 3 through 7)

Faith Formation Commission Disciple I C L
Acts 29 Disciple I C L
Baptism (Bautizo) Preparation Disciple I C L
Bible Blitz Disciple I C L
Bible Study Disciple I C L
Christ Renews Our Community Disciple I C L
Cursillo Ultreya Disciple I C L
FOCCUS Ministry Disciple I C L
Formación Permanente Disciple I C L
Great Date Night Disciple I C L
Kids-4-Jesus Disciple I C L
Men's Bible Study Prayer Disciple I C L
Ministry of Mothers Sharing Disciple I C L
Natural Family Planning Disciple I C L
New Beginnings Disciple I C L
Niños En Acción Disciple I C L
Parish Event Childcare Disciple I C L
R.C.I.A Sponsor Disciple I C L
Religious Education Catechist Disciple I C L
Vacation Bible School Disciple I C L
Youth Ministry Disciple I C L

SCHOOL MINISTRIES (Pages 7 through 9)

School Commission I C L
Pre-School Disciple I C L
School Alumni I C L
School Auction Disciple I C L
School Disciple I C L
School - Home & School Assoc. Disciple I C L

SOCIAL MINISTRIES (Pages 9 through 13)

Social Ministries Commission Disciple I C L
Adult Center Disciple I C L
Alzheimer's Support Group Disciple I C L
Liturgy for Children (Liturgia de los Niños) I C L
Ministry for the Deaf Disciple I C L

Angels Among Us Disciple I C L
Bereavement (Funerales) Team Disciple I C L
Blood Bank Donor Disciple I C L
Coalition for the Homeless Disciple I C L
Dial-A-Smile Disciple I C L
Faith Community Nursing Disciple I C L
Family Services Disciple I C L
Grief Support Group Disciple I C L
Habitat for Humanity Disciple I C L
Income Tax Counseling Disciple I C L
Just Faith Disciple I C L
K.I.S.S.M. Disciple I C L
Ministry to the Sick (Ministerio de Enfermos) I C L
Parish Advocate for the Elderly Disciple I C L
Prayer Blanket Team Disciple I C L
Prison Family Support Group Disciple I C L
Respect Life Disciple I C L
Sunday Bus Driver Disciple I C L
Thanksgiving Feast Disciple I C L
Wednesday Retired Parishioners Disciple I C L

WORSHIP MINISTRIES (Pages 14 through 18)

Worship Commission Disciple I C L
Altar Linens Society Disciple I C L
Altar Servers Leader Disciple I C L
Art & Environment Disciple I C L
Celebrate Marriage Sunday Disciple I C L
Centering Prayer (Oración Centrante) I C L
Choir - Adult (10am Sunday) Disciple I C L
Choir - Adult Handbell Disciple I C L
Choir - Children's Adult Disciple I C L
Choir - Contemporary Disciple I C L
Choir - Coro Hispano Disciple I C L
Eucharistic Adoration/Holy Hour Disciple I C L
Grupo de Oración Carismático Disciple I C L
Hospitality/Greeters Disciple I C L
Instrumentalists Disciple I C L
Juan XXIII Prayer Disciple I C L
Lay Witness Speaker Disciple I C L
Men's Club Disciple I C L

TIME & TALENT DISCIPLESHIP COMMITMENT (AGES 18+)

Our Lady's Rosary Group Prayer Disciple	<input type="radio"/>	<input type="radio"/>	<input type="radio"/>	Missionary Opportunities Disciple	<input type="radio"/>	<input type="radio"/>	<input type="radio"/>
Parish Life Prayer Disciple (US Mail)	<input type="radio"/>	<input type="radio"/>	<input type="radio"/>	Parish Endow Investment Team Disciple	<input type="radio"/>	<input type="radio"/>	<input type="radio"/>
Parish Life Prayer Disciple (E-mail)	<input type="radio"/>	<input type="radio"/>	<input type="radio"/>	Parish Endow Steering Team Disciple	<input type="radio"/>	<input type="radio"/>	<input type="radio"/>
Prayer Angels Disciple	<input type="radio"/>	<input type="radio"/>	<input type="radio"/>	Prayerful Party Planners Disciple	<input type="radio"/>	<input type="radio"/>	<input type="radio"/>
Readers Disciple	<input type="radio"/>	<input type="radio"/>	<input type="radio"/>	Professional Skill/Talent _____	<input type="radio"/>	<input type="radio"/>	<input type="radio"/>
Rosario en Familia Prayer Disciple	<input type="radio"/>	<input type="radio"/>	<input type="radio"/>				
Sacristans Disciple	<input type="radio"/>	<input type="radio"/>	<input type="radio"/>	St. Bernardine (SB) Commun. Disciple	<input type="radio"/>	<input type="radio"/>	<input type="radio"/>
Technical Support Ministry Disciple	<input type="radio"/>	<input type="radio"/>	<input type="radio"/>	SB Creative/Technical Writer Disciple	<input type="radio"/>	<input type="radio"/>	<input type="radio"/>
Translations Team Disciple	<input type="radio"/>	<input type="radio"/>	<input type="radio"/>	SB Desktop Publishers/Graphics Disciple	<input type="radio"/>	<input type="radio"/>	<input type="radio"/>
Ushers (Ujieres) Disciple	<input type="radio"/>	<input type="radio"/>	<input type="radio"/>	SB Fine Artist Disciple	<input type="radio"/>	<input type="radio"/>	<input type="radio"/>
STEWARDSHIP MINISTRIES (Pages 19 through 23)				SB Ministerio de Comunicaciones Disciple	<input type="radio"/>	<input type="radio"/>	<input type="radio"/>
C.A.S.T. Ministry Disciple	<input type="radio"/>	<input type="radio"/>	<input type="radio"/>	SB Photographer Disciple	<input type="radio"/>	<input type="radio"/>	<input type="radio"/>
CCW/St. Anne Circle Disciple	<input type="radio"/>	<input type="radio"/>	<input type="radio"/>	SB PowerPoint Scribe Disciple	<input type="radio"/>	<input type="radio"/>	<input type="radio"/>
CCW/St. Eamon Circle Disciple	<input type="radio"/>	<input type="radio"/>	<input type="radio"/>	Stewardship Develop. Team Disciple (p.2)	<input type="radio"/>	<input type="radio"/>	<input type="radio"/>
CCW/St. Gerard Circle Disciple	<input type="radio"/>	<input type="radio"/>	<input type="radio"/>	Sunday Coffee Gathering Disciple	<input type="radio"/>	<input type="radio"/>	<input type="radio"/>
CCW/St. Luke Circle Disciple	<input type="radio"/>	<input type="radio"/>	<input type="radio"/>	Time & Talent Team Disciple (p.2)	<input type="radio"/>	<input type="radio"/>	<input type="radio"/>
CCW/St. Paul Circle Disciple	<input type="radio"/>	<input type="radio"/>	<input type="radio"/>	Vocations Disciple	<input type="radio"/>	<input type="radio"/>	<input type="radio"/>
CCW/St. Robert Circle Disciple	<input type="radio"/>	<input type="radio"/>	<input type="radio"/>	Welcoming Team Disciple	<input type="radio"/>	<input type="radio"/>	<input type="radio"/>
CCW/St. Theresa Circle Disciple	<input type="radio"/>	<input type="radio"/>	<input type="radio"/>	TEMPORAL MINISTRIES (Page 24)			
CCW/St. Vincent de Paul Circle Disciple	<input type="radio"/>	<input type="radio"/>	<input type="radio"/>	CommunityFest Disciple	<input type="radio"/>	<input type="radio"/>	<input type="radio"/>
CCW/Members At-Large Disciple	<input type="radio"/>	<input type="radio"/>	<input type="radio"/>	Grotto Environmentalists Disciple	<input type="radio"/>	<input type="radio"/>	<input type="radio"/>
Computer Data Entry Disciple	<input type="radio"/>	<input type="radio"/>	<input type="radio"/>	Maintenance Martyrs Disciple	<input type="radio"/>	<input type="radio"/>	<input type="radio"/>
Connection Café Disciple	<input type="radio"/>	<input type="radio"/>	<input type="radio"/>	Office Angels Disciple	<input type="radio"/>	<input type="radio"/>	<input type="radio"/>
Employment Networking Support Group	<input type="radio"/>	<input type="radio"/>	<input type="radio"/>	Pew Gardeners Disciple	<input type="radio"/>	<input type="radio"/>	<input type="radio"/>
Evangelization Team Disciple	<input type="radio"/>	<input type="radio"/>	<input type="radio"/>	Religious Store Disciple	<input type="radio"/>	<input type="radio"/>	<input type="radio"/>
Financial Planning Ministry Disciple	<input type="radio"/>	<input type="radio"/>	<input type="radio"/>	AUXILIARY MINISTRIES (Page 25)			
Guardian Angel Society Disciple	<input type="radio"/>	<input type="radio"/>	<input type="radio"/>	Irish-American Cultural Society Disciple	<input type="radio"/>	<input type="radio"/>	<input type="radio"/>
Heavenly Helpers Disciple	<input type="radio"/>	<input type="radio"/>	<input type="radio"/>	Knights of Columbus Disciple	<input type="radio"/>	<input type="radio"/>	<input type="radio"/>

YOUTH 12 & UNDER TIME & TALENT COMMITMENT

Altar Servers (5 th Grade & Up) Disciple	<input type="radio"/>	<input type="radio"/>	<input type="radio"/>	(Birth Date: _____)	<input type="radio"/>	<input type="radio"/>	<input type="radio"/>
Children's Choir Disciple	<input type="radio"/>	<input type="radio"/>	<input type="radio"/>	Niños en Acción	<input type="radio"/>	<input type="radio"/>	<input type="radio"/>
CommunityFest Disciple	<input type="radio"/>	<input type="radio"/>	<input type="radio"/>	Pew Gardeners Disciple	<input type="radio"/>	<input type="radio"/>	<input type="radio"/>
Early Learning Center Student	<input type="radio"/>	<input type="radio"/>	<input type="radio"/>	Religious Education Student	<input type="radio"/>	<input type="radio"/>	<input type="radio"/>
Eucharistic Adoration Prayer Disciple	<input type="radio"/>	<input type="radio"/>	<input type="radio"/>	Scouts _____	<input type="radio"/>	<input type="radio"/>	<input type="radio"/>
Individual Prayer Disciple	<input type="radio"/>	<input type="radio"/>	<input type="radio"/>	St. Mary Magdalen School Student	<input type="radio"/>	<input type="radio"/>	<input type="radio"/>
Kids-4-Jesus	<input type="radio"/>	<input type="radio"/>	<input type="radio"/>	Thanksgiving Feast Disciple	<input type="radio"/>	<input type="radio"/>	<input type="radio"/>
Liturgy of the Word for Children	<input type="radio"/>	<input type="radio"/>	<input type="radio"/>	The Edge Middle School Youth Ministry	<input type="radio"/>	<input type="radio"/>	<input type="radio"/>
				Vacation Bible School	<input type="radio"/>	<input type="radio"/>	<input type="radio"/>

YOUTH (AGES 13 – 17) TIME & TALENT COMMITMENT

Art & Environment Disciple	<input type="radio"/>	<input type="radio"/>	<input type="radio"/>	(Birth Date: _____)	<input type="radio"/>	<input type="radio"/>	<input type="radio"/>
Bible Blitz Disciple	<input type="radio"/>	<input type="radio"/>	<input type="radio"/>	Life Teen High School Youth Ministry	<input type="radio"/>	<input type="radio"/>	<input type="radio"/>
Coalition for the Homeless Disciple	<input type="radio"/>	<input type="radio"/>	<input type="radio"/>	Niños en Acción Disciple	<input type="radio"/>	<input type="radio"/>	<input type="radio"/>
CommunityFest Disciple	<input type="radio"/>	<input type="radio"/>	<input type="radio"/>	Parish Event Childcare Disciple	<input type="radio"/>	<input type="radio"/>	<input type="radio"/>
Computer Data Entry Disciple	<input type="radio"/>	<input type="radio"/>	<input type="radio"/>	Pew Gardeners Disciple	<input type="radio"/>	<input type="radio"/>	<input type="radio"/>
Connection Café Disciple	<input type="radio"/>	<input type="radio"/>	<input type="radio"/>	Photographers Disciple	<input type="radio"/>	<input type="radio"/>	<input type="radio"/>
Choir Disciple _____	<input type="radio"/>	<input type="radio"/>	<input type="radio"/>	Prayer Angels Disciple	<input type="radio"/>	<input type="radio"/>	<input type="radio"/>
Pre-School Disciple	<input type="radio"/>	<input type="radio"/>	<input type="radio"/>	Prayer Blanket Team Disciple	<input type="radio"/>	<input type="radio"/>	<input type="radio"/>
Eucharistic Adoration Disciple	<input type="radio"/>	<input type="radio"/>	<input type="radio"/>	Prayerful Party Planners Disciple	<input type="radio"/>	<input type="radio"/>	<input type="radio"/>
Eucharistic Minister Disciple	<input type="radio"/>	<input type="radio"/>	<input type="radio"/>	Readers Disciple	<input type="radio"/>	<input type="radio"/>	<input type="radio"/>
Scouts _____	<input type="radio"/>	<input type="radio"/>	<input type="radio"/>	Religious Education Candidate	<input type="radio"/>	<input type="radio"/>	<input type="radio"/>
Habitat for Humanity (Ages 16+) Disciple	<input type="radio"/>	<input type="radio"/>	<input type="radio"/>	Respect Life Disciple	<input type="radio"/>	<input type="radio"/>	<input type="radio"/>
Hospitality/Greeters Disciple	<input type="radio"/>	<input type="radio"/>	<input type="radio"/>	SMM School Support Disciple	<input type="radio"/>	<input type="radio"/>	<input type="radio"/>
Individual Prayer (By Mail) Disciple	<input type="radio"/>	<input type="radio"/>	<input type="radio"/>	Sunday Coffee Gathering Disciple	<input type="radio"/>	<input type="radio"/>	<input type="radio"/>
Instrumentalist Disciple	<input type="radio"/>	<input type="radio"/>	<input type="radio"/>	Thanksgiving Feast Disciple	<input type="radio"/>	<input type="radio"/>	<input type="radio"/>
Kids-4-Jesus Disciple	<input type="radio"/>	<input type="radio"/>	<input type="radio"/>	Ushers (Ages 16 & 17) Disciple	<input type="radio"/>	<input type="radio"/>	<input type="radio"/>
Lay Witness Speaker Disciple	<input type="radio"/>	<input type="radio"/>	<input type="radio"/>	Vacation Bible School Disciple	<input type="radio"/>	<input type="radio"/>	<input type="radio"/>
				Welcoming Team Disciple	<input type="radio"/>	<input type="radio"/>	<input type="radio"/>

I am not sure where to serve. I would like to speak with someone in discerning the right fit.

I need or would like to recommend a service not listed in this book: _____



Time & Talent

Fostering Stewardship as a way of life

TIME & TALENT DISCIPLESHIP COMMITMENT (AGES 18+)

Instructions:

Please complete (**Sign-up as an individual; we would appreciate each family member completing a separate form**) and return to the parish. Mark I, C, or L in the appropriate column to the right of each opportunity to indicate your status in a specific ministry program and desire to be contacted by a pastoral leader to discuss your participation in that ministry.

(I = Interested, C = Continued Involvement, or L = Leaving the Ministry)

(If you wish to receive services from any ministry below, please contact the Chairperson directly.)

Individual Name: _____

Address: _____

Home Phone: _____ **Cell:** _____ **Work:** _____

E-Mail: _____ **Best Time to Call:** _____ **Which Mass do you regularly attend?**

5pm Sat. 7pm Sat. (Spanish) 8am Sun. 10am Sun. Noon Sun. 6pm Sun.

PASTORAL LEADERSHIP (Page 2)

Pastoral Council Disciple I C L
Finance Council Disciple I C L
Stewardship Council Disciple I C L

FAITH FORMATION MINISTRIES (Pages 3 through 7)

Faith Formation Commission Disciple I C L
Acts 29 Disciple I C L
Baptism (Bautizo) Preparation Disciple I C L
Bible Blitz Disciple I C L
Bible Study Disciple I C L
Christ Renews Our Community Disciple I C L
Cursillo Ultreya Disciple I C L
FOCCUS Ministry Disciple I C L
Formación Permanente Disciple I C L
Great Date Night Disciple I C L
Kids-4-Jesus Disciple I C L
Men's Bible Study Prayer Disciple I C L
Ministry of Mothers Sharing Disciple I C L
Natural Family Planning Disciple I C L
New Beginnings Disciple I C L
Niños En Acción Disciple I C L
Parish Event Childcare Disciple I C L
R.C.I.A Sponsor Disciple I C L
Religious Education Catechist Disciple I C L
Vacation Bible School Disciple I C L
Youth Ministry Disciple I C L

SCHOOL MINISTRIES (Pages 7 through 9)

School Commission I C L
Pre-School Disciple I C L
School Alumni I C L
School Auction Disciple I C L
School Disciple I C L
School - Home & School Assoc. Disciple I C L

SOCIAL MINISTRIES (Pages 9 through 13)

Social Ministries Commission Disciple I C L
Adult Center Disciple I C L
Alzheimer's Support Group Disciple I C L
Liturgy for Children (Liturgia de los Niños) I C L
Ministry for the Deaf Disciple I C L

Angels Among Us Disciple I C L
Bereavement (Funerales) Team Disciple I C L
Blood Bank Donor Disciple I C L
Coalition for the Homeless Disciple I C L
Dial-A-Smile Disciple I C L
Faith Community Nursing Disciple I C L
Family Services Disciple I C L
Grief Support Group Disciple I C L
Habitat for Humanity Disciple I C L
Income Tax Counseling Disciple I C L
Just Faith Disciple I C L
K.I.S.S.M. Disciple I C L
Ministry to the Sick (Ministerio de Enfermos) I C L
Parish Advocate for the Elderly Disciple I C L
Prayer Blanket Team Disciple I C L
Prison Family Support Group Disciple I C L
Respect Life Disciple I C L
Sunday Bus Driver Disciple I C L
Thanksgiving Feast Disciple I C L
Wednesday Retired Parishioners Disciple I C L

WORSHIP MINISTRIES (Pages 14 through 18)

Worship Commission Disciple I C L
Altar Linens Society Disciple I C L
Altar Servers Leader Disciple I C L
Art & Environment Disciple I C L
Celebrate Marriage Sunday Disciple I C L
Centering Prayer (Oración Centrante) I C L
Choir - Adult (10am Sunday) Disciple I C L
Choir - Adult Handbell Disciple I C L
Choir - Children's Adult Disciple I C L
Choir - Contemporary Disciple I C L
Choir - Coro Hispano Disciple I C L
Eucharistic Adoration/Holy Hour Disciple I C L
Grupo de Oración Carismático Disciple I C L
Hospitality/Greeters Disciple I C L
Instrumentalists Disciple I C L
Juan XXIII Prayer Disciple I C L
Lay Witness Speaker Disciple I C L
Men's Club Disciple I C L

TIME & TALENT DISCIPLESHIP COMMITMENT (AGES 18+)

Our Lady's Rosary Group Prayer Disciple	<input type="radio"/>	<input type="radio"/>	<input type="radio"/>	Missionary Opportunities Disciple	<input type="radio"/>	<input type="radio"/>	<input type="radio"/>
Parish Life Prayer Disciple (US Mail)	<input type="radio"/>	<input type="radio"/>	<input type="radio"/>	Parish Endow Investment Team Disciple	<input type="radio"/>	<input type="radio"/>	<input type="radio"/>
Parish Life Prayer Disciple (E-mail)	<input type="radio"/>	<input type="radio"/>	<input type="radio"/>	Parish Endow Steering Team Disciple	<input type="radio"/>	<input type="radio"/>	<input type="radio"/>
Prayer Angels Disciple	<input type="radio"/>	<input type="radio"/>	<input type="radio"/>	Prayerful Party Planners Disciple	<input type="radio"/>	<input type="radio"/>	<input type="radio"/>
Readers Disciple	<input type="radio"/>	<input type="radio"/>	<input type="radio"/>	Professional Skill/Talent _____	<input type="radio"/>	<input type="radio"/>	<input type="radio"/>
Rosario en Familia Prayer Disciple	<input type="radio"/>	<input type="radio"/>	<input type="radio"/>				
Sacristans Disciple	<input type="radio"/>	<input type="radio"/>	<input type="radio"/>	St. Bernardine (SB) Commun. Disciple	<input type="radio"/>	<input type="radio"/>	<input type="radio"/>
Technical Support Ministry Disciple	<input type="radio"/>	<input type="radio"/>	<input type="radio"/>	SB Creative/Technical Writer Disciple	<input type="radio"/>	<input type="radio"/>	<input type="radio"/>
Translations Team Disciple	<input type="radio"/>	<input type="radio"/>	<input type="radio"/>	SB Desktop Publishers/Graphics Disciple	<input type="radio"/>	<input type="radio"/>	<input type="radio"/>
Ushers (Ujieres) Disciple	<input type="radio"/>	<input type="radio"/>	<input type="radio"/>	SB Fine Artist Disciple	<input type="radio"/>	<input type="radio"/>	<input type="radio"/>
STEWARDSHIP MINISTRIES (Pages 19 through 23)				SB Ministerio de Comunicaciones Disciple	<input type="radio"/>	<input type="radio"/>	<input type="radio"/>
C.A.S.T. Ministry Disciple	<input type="radio"/>	<input type="radio"/>	<input type="radio"/>	SB Photographer Disciple	<input type="radio"/>	<input type="radio"/>	<input type="radio"/>
CCW/St. Anne Circle Disciple	<input type="radio"/>	<input type="radio"/>	<input type="radio"/>	SB PowerPoint Scribe Disciple	<input type="radio"/>	<input type="radio"/>	<input type="radio"/>
CCW/St. Eamon Circle Disciple	<input type="radio"/>	<input type="radio"/>	<input type="radio"/>	Stewardship Develop. Team Disciple (p.2)	<input type="radio"/>	<input type="radio"/>	<input type="radio"/>
CCW/St. Gerard Circle Disciple	<input type="radio"/>	<input type="radio"/>	<input type="radio"/>	Sunday Coffee Gathering Disciple	<input type="radio"/>	<input type="radio"/>	<input type="radio"/>
CCW/St. Luke Circle Disciple	<input type="radio"/>	<input type="radio"/>	<input type="radio"/>	Time & Talent Team Disciple (p.2)	<input type="radio"/>	<input type="radio"/>	<input type="radio"/>
CCW/St. Paul Circle Disciple	<input type="radio"/>	<input type="radio"/>	<input type="radio"/>	Vocations Disciple	<input type="radio"/>	<input type="radio"/>	<input type="radio"/>
CCW/St. Robert Circle Disciple	<input type="radio"/>	<input type="radio"/>	<input type="radio"/>	Welcoming Team Disciple	<input type="radio"/>	<input type="radio"/>	<input type="radio"/>
CCW/St. Theresa Circle Disciple	<input type="radio"/>	<input type="radio"/>	<input type="radio"/>	TEMPORAL MINISTRIES (Page 24)			
CCW/St. Vincent de Paul Circle Disciple	<input type="radio"/>	<input type="radio"/>	<input type="radio"/>	CommunityFest Disciple	<input type="radio"/>	<input type="radio"/>	<input type="radio"/>
CCW/Members At-Large Disciple	<input type="radio"/>	<input type="radio"/>	<input type="radio"/>	Grotto Environmentalists Disciple	<input type="radio"/>	<input type="radio"/>	<input type="radio"/>
Computer Data Entry Disciple	<input type="radio"/>	<input type="radio"/>	<input type="radio"/>	Maintenance Martyrs Disciple	<input type="radio"/>	<input type="radio"/>	<input type="radio"/>
Connection Café Disciple	<input type="radio"/>	<input type="radio"/>	<input type="radio"/>	Office Angels Disciple	<input type="radio"/>	<input type="radio"/>	<input type="radio"/>
Employment Networking Support Group	<input type="radio"/>	<input type="radio"/>	<input type="radio"/>	Pew Gardeners Disciple	<input type="radio"/>	<input type="radio"/>	<input type="radio"/>
Evangelization Team Disciple	<input type="radio"/>	<input type="radio"/>	<input type="radio"/>	Religious Store Disciple	<input type="radio"/>	<input type="radio"/>	<input type="radio"/>
Financial Planning Ministry Disciple	<input type="radio"/>	<input type="radio"/>	<input type="radio"/>	AUXILIARY MINISTRIES (Page 25)			
Guardian Angel Society Disciple	<input type="radio"/>	<input type="radio"/>	<input type="radio"/>	Irish-American Cultural Society Disciple	<input type="radio"/>	<input type="radio"/>	<input type="radio"/>
Heavenly Helpers Disciple	<input type="radio"/>	<input type="radio"/>	<input type="radio"/>	Knights of Columbus Disciple	<input type="radio"/>	<input type="radio"/>	<input type="radio"/>

YOUTH 12 & UNDER TIME & TALENT COMMITMENT

Altar Servers (5 th Grade & Up) Disciple	<input type="radio"/>	<input type="radio"/>	<input type="radio"/>	(Birth Date: _____)	<input type="radio"/>	<input type="radio"/>	<input type="radio"/>
Children's Choir Disciple	<input type="radio"/>	<input type="radio"/>	<input type="radio"/>	Niños en Acción	<input type="radio"/>	<input type="radio"/>	<input type="radio"/>
CommunityFest Disciple	<input type="radio"/>	<input type="radio"/>	<input type="radio"/>	Pew Gardeners Disciple	<input type="radio"/>	<input type="radio"/>	<input type="radio"/>
Early Learning Center Student	<input type="radio"/>	<input type="radio"/>	<input type="radio"/>	Religious Education Student	<input type="radio"/>	<input type="radio"/>	<input type="radio"/>
Eucharistic Adoration Prayer Disciple	<input type="radio"/>	<input type="radio"/>	<input type="radio"/>	Scouts _____	<input type="radio"/>	<input type="radio"/>	<input type="radio"/>
Individual Prayer Disciple	<input type="radio"/>	<input type="radio"/>	<input type="radio"/>	St. Mary Magdalen School Student	<input type="radio"/>	<input type="radio"/>	<input type="radio"/>
Kids-4-Jesus	<input type="radio"/>	<input type="radio"/>	<input type="radio"/>	Thanksgiving Feast Disciple	<input type="radio"/>	<input type="radio"/>	<input type="radio"/>
Liturgy of the Word for Children	<input type="radio"/>	<input type="radio"/>	<input type="radio"/>	The Edge Middle School Youth Ministry	<input type="radio"/>	<input type="radio"/>	<input type="radio"/>
				Vacation Bible School	<input type="radio"/>	<input type="radio"/>	<input type="radio"/>

YOUTH (AGES 13 – 17) TIME & TALENT COMMITMENT

Art & Environment Disciple	<input type="radio"/>	<input type="radio"/>	<input type="radio"/>	(Birth Date: _____)	<input type="radio"/>	<input type="radio"/>	<input type="radio"/>
Bible Blitz Disciple	<input type="radio"/>	<input type="radio"/>	<input type="radio"/>	Life Teen High School Youth Ministry	<input type="radio"/>	<input type="radio"/>	<input type="radio"/>
Coalition for the Homeless Disciple	<input type="radio"/>	<input type="radio"/>	<input type="radio"/>	Niños en Acción Disciple	<input type="radio"/>	<input type="radio"/>	<input type="radio"/>
CommunityFest Disciple	<input type="radio"/>	<input type="radio"/>	<input type="radio"/>	Parish Event Childcare Disciple	<input type="radio"/>	<input type="radio"/>	<input type="radio"/>
Computer Data Entry Disciple	<input type="radio"/>	<input type="radio"/>	<input type="radio"/>	Pew Gardeners Disciple	<input type="radio"/>	<input type="radio"/>	<input type="radio"/>
Connection Café Disciple	<input type="radio"/>	<input type="radio"/>	<input type="radio"/>	Photographers Disciple	<input type="radio"/>	<input type="radio"/>	<input type="radio"/>
Choir Disciple _____	<input type="radio"/>	<input type="radio"/>	<input type="radio"/>	Prayer Angels Disciple	<input type="radio"/>	<input type="radio"/>	<input type="radio"/>
Pre-School Disciple	<input type="radio"/>	<input type="radio"/>	<input type="radio"/>	Prayer Blanket Team Disciple	<input type="radio"/>	<input type="radio"/>	<input type="radio"/>
Eucharistic Adoration Disciple	<input type="radio"/>	<input type="radio"/>	<input type="radio"/>	Prayerful Party Planners Disciple	<input type="radio"/>	<input type="radio"/>	<input type="radio"/>
Eucharistic Minister Disciple	<input type="radio"/>	<input type="radio"/>	<input type="radio"/>	Readers Disciple	<input type="radio"/>	<input type="radio"/>	<input type="radio"/>
Scouts _____	<input type="radio"/>	<input type="radio"/>	<input type="radio"/>	Religious Education Candidate	<input type="radio"/>	<input type="radio"/>	<input type="radio"/>
Habitat for Humanity (Ages 16+) Disciple	<input type="radio"/>	<input type="radio"/>	<input type="radio"/>	Respect Life Disciple	<input type="radio"/>	<input type="radio"/>	<input type="radio"/>
Hospitality/Greeters Disciple	<input type="radio"/>	<input type="radio"/>	<input type="radio"/>	SMM School Support Disciple	<input type="radio"/>	<input type="radio"/>	<input type="radio"/>
Individual Prayer (By Mail) Disciple	<input type="radio"/>	<input type="radio"/>	<input type="radio"/>	Sunday Coffee Gathering Disciple	<input type="radio"/>	<input type="radio"/>	<input type="radio"/>
Instrumentalist Disciple	<input type="radio"/>	<input type="radio"/>	<input type="radio"/>	Thanksgiving Feast Disciple	<input type="radio"/>	<input type="radio"/>	<input type="radio"/>
Kids-4-Jesus Disciple	<input type="radio"/>	<input type="radio"/>	<input type="radio"/>	Ushers (Ages 16 & 17) Disciple	<input type="radio"/>	<input type="radio"/>	<input type="radio"/>
Lay Witness Speaker Disciple	<input type="radio"/>	<input type="radio"/>	<input type="radio"/>	Vacation Bible School Disciple	<input type="radio"/>	<input type="radio"/>	<input type="radio"/>
				Welcoming Team Disciple	<input type="radio"/>	<input type="radio"/>	<input type="radio"/>

I am not sure where to serve. I would like to speak with someone in discerning the right fit.

I need or would like to recommend a service not listed in this book: _____



Time & Talent

Fostering Stewardship as a way of life

THE CATHOLIC THEOLOGY OF STEWARDSHIP

“As members of the Church, Jesus calls us to be disciples. This has astonishing implications:

Mature disciples make a conscious decision to follow Jesus, no matter what the cost.

Christian disciples experience conversion – life-shaping changes of mind and heart – and commit their very selves to the Lord...

Jesus’ disciples and Christian Stewards recognize God as the origin of life, giver of freedom, and source of all things. We are grateful for the gifts we have received and eager to use them to show our love for God and for one another...

Jesus calls us, as his disciples, to a new way of life – the Christian way of life – of which Stewardship is part.

But Jesus does not call us as nameless people in a faceless crowd. He calls us individually, by name. Each one of us – clergy, religious, lay person; married, single; adult, child – has a personal vocation. God intends each one of us to play a unique role in carrying out the divine plan...

This mission – proclaiming and teaching, serving and sanctifying – is our task. It is the personal responsibility of each one of us as stewards of the Church...

The challenge, then, is to understand our role – our vocation – and to respond generously to this call from God... Christ calls each of us to be stewards of our personal vocations, which we receive from God...

We must ask ourselves: Do we...wish to be disciples of Jesus Christ and Christian Stewards of our world and our Church?”

Excerpts from *Stewardship: A Disciple’s Response*, the
U.S. Bishops’ Pastoral Letter on Stewardship

